



ITKB-11-01-12-20-EN

Quick Start

# Indicator

---

- PUE HX5.EX

To view the full user manual, go to the website or scan the QR code:

---

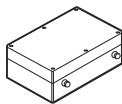


[radwag.com/pl/manuals/903](http://radwag.com/pl/manuals/903)

# 1. CONTENT



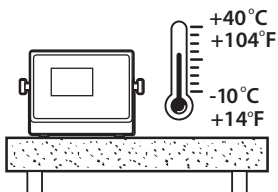
Indicator  
x1



Power supply\*  
x1

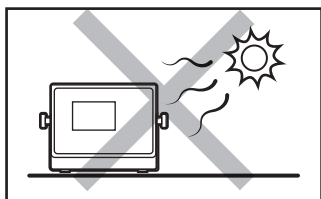
*\*The type of plug may vary depending on the country.*

# 2. NOTES AND WARNINGS

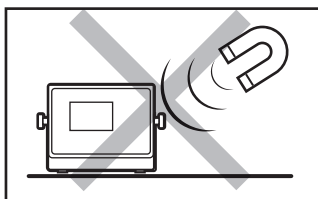


Operate the indicator in a room free from dust where the temperature ranges -10–40 °C (14–104 °F) and where the relative humidity is below 80%. Potential temperature change shall occur gradually and slowly.

Place the scale on a table or a wall bracket ensuring stability. For the most stable and repeatable results it is recommended to use an anti-vibration table.



Place the scale away from heat sources. Avoid exposing the scale to the sunlight.



Avoid exposing the scale to the influence of a magnetic field. Do not weigh magnetic substances.

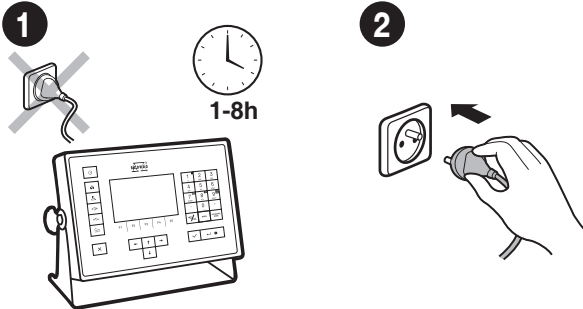
## 3. PREPARING FOR WORK



Place the device on the workstation and leave it until it reaches ambient temperature.

### 3.1. Indicator Temperature Stabilization

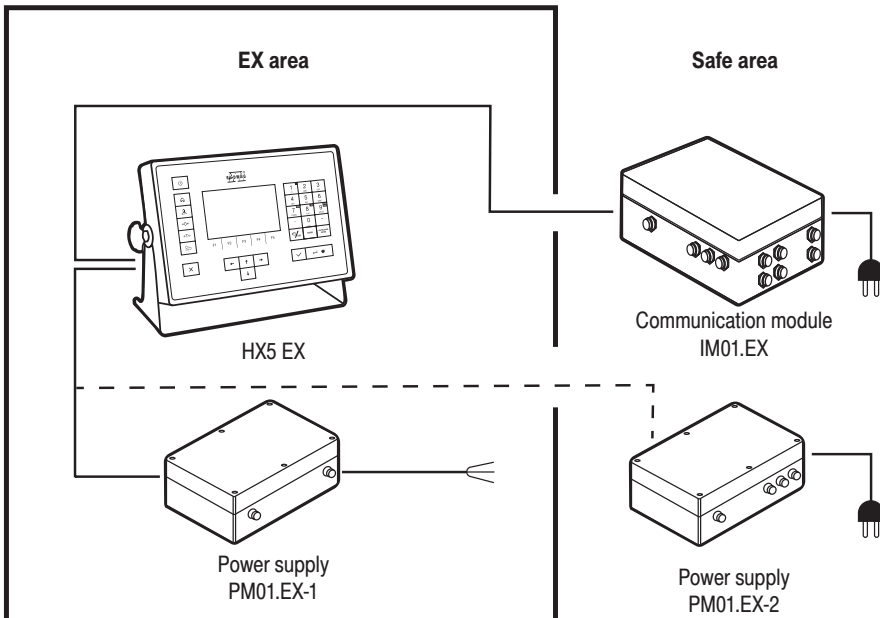
Prior to connecting to the power supply select the appropriate type of connection (see section 3.2)



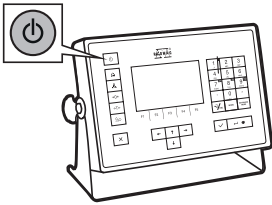
Prior to switching the device on let it reach room temperature (estimated stabilization time: 8 hours).

Connect the power supply to the mains.

### 3.2. Power Supply Connection Diagram



### 3.3. Indicator Start-Up



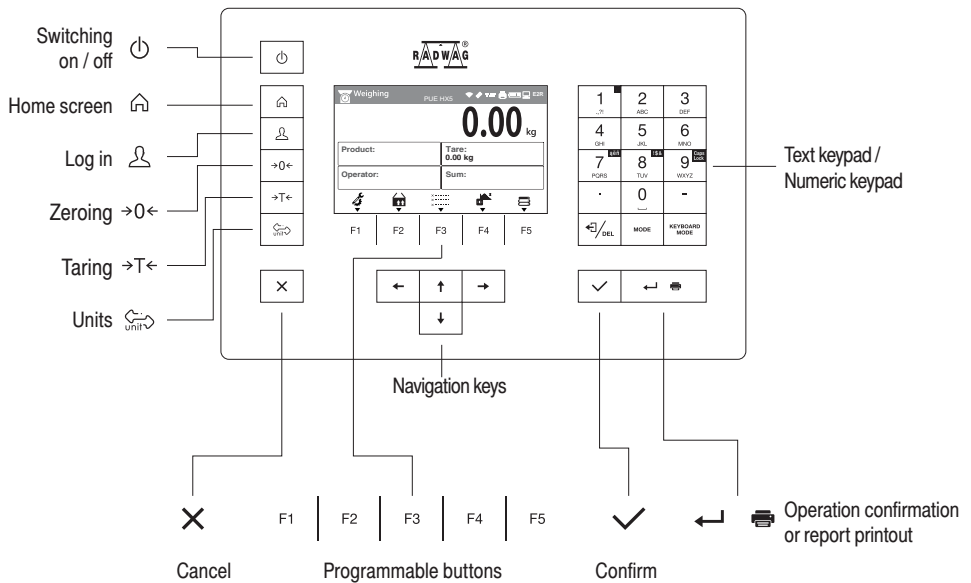
Press ON/OFF key to start the indicator.



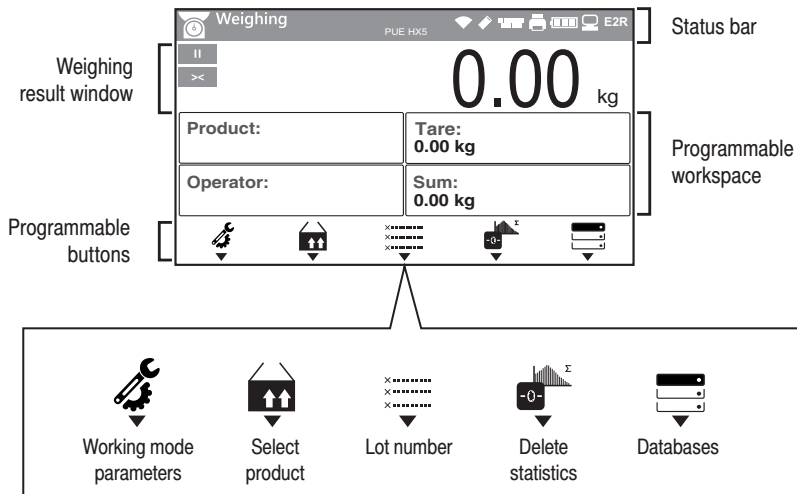
The scale is ready for operation!

## 4. PANEL AND SCREEN

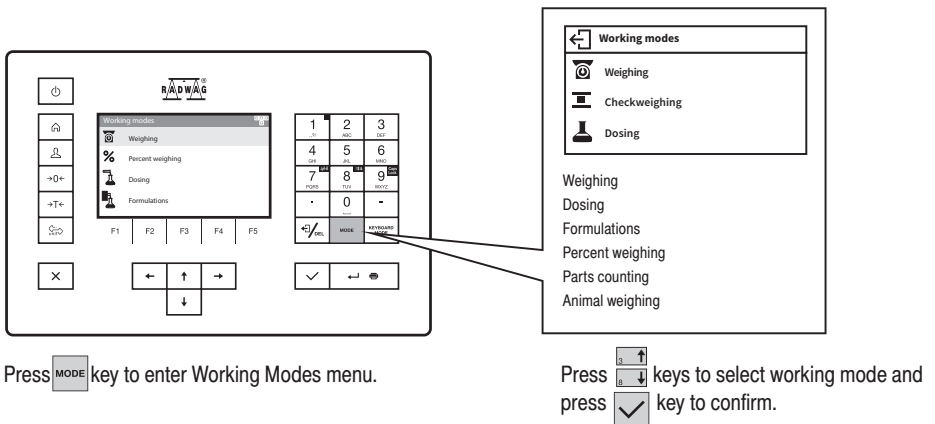
### 4.1. Keypad



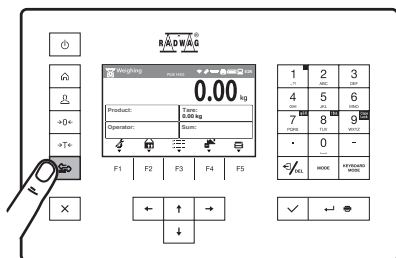
## 4.2. Home Screen




## 4.3. Working Modes



## 4.4. Unit Selection

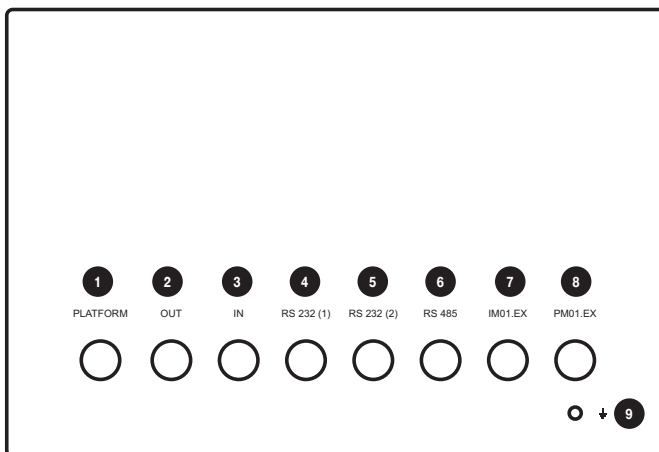


Press  key to change the mass unit.

The indicator enables selecting the following mass units:

- Gram [g]
- Kilogram [kg]
- Carat [ct]
- Ounce [oz]
- Pound [lb]
- Newton [N]
- Custom unit 1 [U1]
- Custom unit 2 [U2]

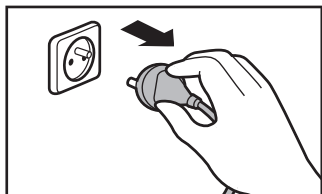
## 5. CONNECTING PERIPHERALS



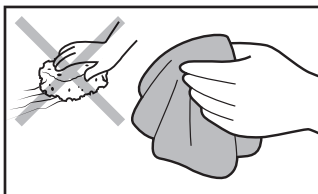
1	Weighing platform connection cable
2	Outputs cable
3	Inputs cable
4	RS232 (1) connector
5	RS232 (2) connector
6	RS485 connector
7	IM01.EX cable gland
8	PM01.EX cable gland
9	Grounding terminal

## 6. CLEANING AND MAINTENANCE

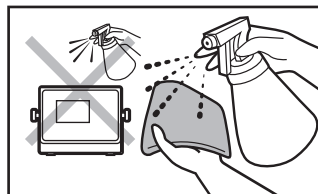
### 6.1. Notes and Warnings



Prior to maintenance it is necessary to disconnect the power supply from the mains and to check grounding connection and status.



For cleaning use only soft cloths made of microfiber, natural fibres or artificial fibres. Do not use any abrasive cloths or any material that may scratch the surface!



Apply the cleanser onto the cloth first. Avoid applying the cleanser directly onto the device!



**Avoid using aggressive cleaning agents (e.g. solvents, cleansers containing chlorine, corrosive substances or bleach).**



**Avoid using cleansers containing abrasive substances or scouring preparations.**



**Make sure that no dust or liquid enters the weighing system and the inside of the indicator.**



**Clean the indicator when there is no risk of explosive atmosphere occurrence.**



**Clean the housing using a wet cloth. It is especially important if the indicator is operated in a room where there is dry air. Moisture protects against accumulation of electrostatic charges.**



**Do not clean the indicator using compressed air.**

### 6.2. Cleaning Tips

- STAINLESS STEEL ELEMENTS, ALUMINUM can be cleaned with a soft cloth slightly moistened with a solution of water and a mild detergent (e.g. soap or dishwashing liquid).
- Plastic elements can be cleaned with a soft cloth slightly moistened with a solution of water and a mild detergent (e.g. soap or dishwashing liquid).
- Dry cleaned elements using soft and dry cloth or use dust-free paper towel to absorb the remaining moisture.
- Do not install the components until they are completely dry.











[www.radwag.com](http://www.radwag.com)