



HX7 Multifunctional Industrial Scales

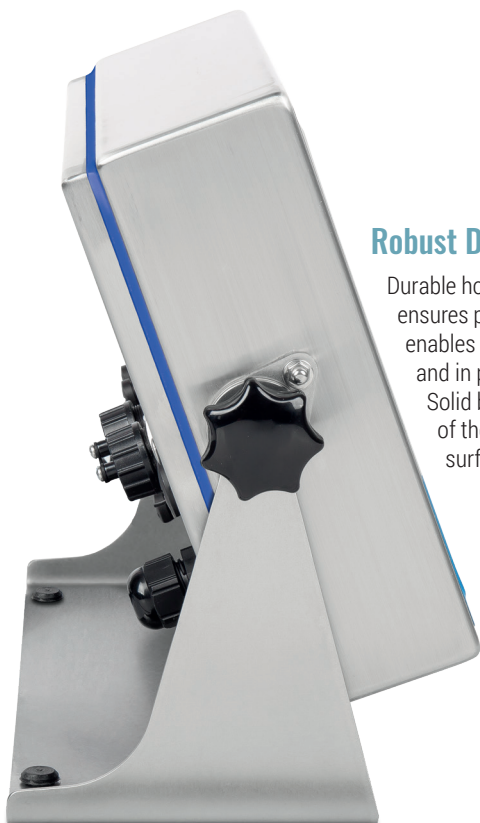
VERSATILE SOLUTION
IN MASS MEASUREMENT PROCESS

PUE HX7 Terminal

QUALITY AND PRECISION IN UNFAVOURABLE WORKING CONDITIONS
ADAPTATION TO THE REQUIREMENTS OF A PRODUCTION PROCESS

An advanced PUE HX7 weighing terminal is a device intended to make reliable industrial scales operating on the basis of one or multiple load cells. Complex communication protocol enables establishing communication with IT, adjustment and control systems.

The highest quality of used components ensures excellent precision and repeatability. The terminal's multifunctional software allows carrying out processes such as weighing, parts counting, dosing, labelling and percent weighing. The software is based on numerous databases and the built-in Alibi Memory guarantees safety of the obtained information.



Robust Design

Durable housing, made of AISI304 stainless steel, ensures protection class of IP66/IP68 which enables operation in harsh industrial conditions and in places of high hygiene standards.

Solid base guarantees stable mounting of the terminal either on any flat horizontal surface or on the wall.

Communication Interfaces

The terminal is equipped with hermetic connectors of the following interfaces: Ethernet, USB, RS 232 and digital inputs/outputs.

In the optional version of the device the communication interfaces can be expanded.



Display

7" colour graphic display of high resolution guarantees clear presentation of displayed information on current state of carried out process. Ease of operation, clear menu and intuitive information arrangement on the display guarantee comfort of operation.



Diode Bar Graph

9-diode bar graph, consisting of colour fields, presents current net mass of a product in reference to the scale range. The bar graph can operate in one of three modes: „linear”, „weighing thresholds signalling”, „checkweighing”.



Battery Power Supply

Use of the optional battery enables the terminal to be operated even when there is either no or unstable power supply. This improves the security of acquired data and comfort of operation.

HX7 Scales

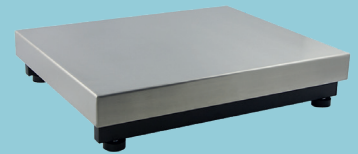
REMARKABLY FAST AND PRECISE MEASUREMENTS
PRECISE WEIGHING USING 1 OR 4 LOAD CELLS

The PUE HX7 terminal can be integrated with any RADWAG-manufactured single or multi-load-cell weighing platform. Basic version of the terminal supports one analog weighing platform. The possibility to install an additional weighing module enables to support two weighing platforms.



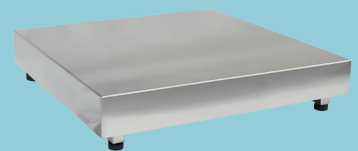
Weighing Terminal	PUE HX7
Housing	AISI 304 stainless steel
IP ingress protection by EN 60529	IP66 / IP68 (1.5 m)
Display	7" graphic display
Keypad	Membrane
OIML class	III
Verification units [e]	6000
Minimum voltage per verification scale interval	0.4 μ V
Maximum voltage per verification scale interval	3.25 μ V
Minimum load cell impedance	50 Ω
Maximum load cell impedance	1200 Ω
Connection of load cells	4 or 6 wires + Shield
Maximum quantity of connected platforms	1 (2 optional model)
Communication interfaces	RS 232
	USB
	Ethernet 10/100 Mbit
	IN \times 4 / OUT \times 4
Operating temperature	-10°C – 40°C
Power supply	100 – 240 V AC 50/60Hz
Battery power supply (option)	7h of continuous operation
Dimensions	340 \times 231 \times 120 mm

1-load-cell platforms



F and C series 1-load-cell platforms

Robust platforms of construction made of St3S carbon steel and protected against corrosion via powder coating. Weighing pan made of AISI304 stainless steel. The F series features a weighing pan with rounded corners and the C series with sharp corners. The IP65 allows to use these platforms in dry environment.



H Series waterproof 1-load-cell platforms

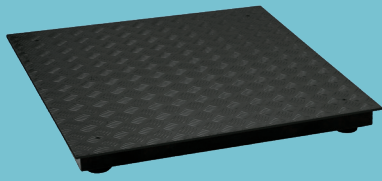
Solid and robust platforms made of AISI304 stainless steel. The IP68 allows to use these platforms in challenging industrial environment, at direct contact with water and in places of high hygiene standards.



HR Series waterproof and acid-resistant 1-load-cell platforms

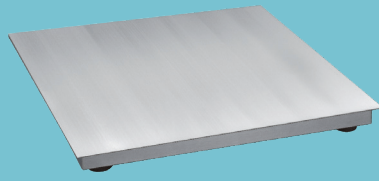
Solid and robust platforms made of acid-resistant AISI316 stainless steel. The platforms use stainless steel load cell of an increased ingress protection. The IP68 allows to use these platforms in challenging industrial environment, at direct contact with water and corrosive substances.

4-load-cell platforms



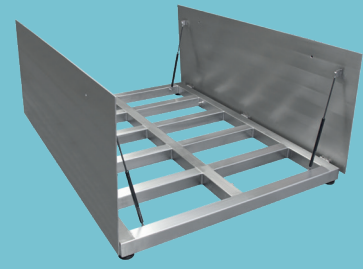
4C Series
4-load-cell platforms

The platforms are made of St3S structural carbon steel and protected against corrosion via powder coating. Their tear plate surface prevents potential slip. The IP65 allows to use these platforms in dry environment.



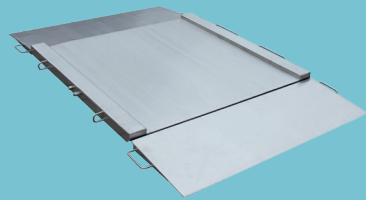
4H Series
waterproof 4-load-cell platforms

Very solid and robust platforms made of AISI304 stainless steel. The IP68 allows to use these platforms in challenging industrial environment and at direct contact with water.



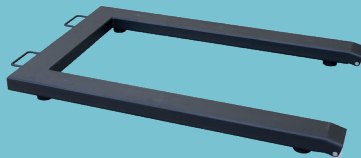
4H/Z Series
embedded stainless steel platforms
with opening option

Extremely solid and reliable platforms made of AISI304 stainless steel. The platforms feature frame that is to be embedded in the ground, and a weighing pan with opening option, which allows to maintain the device clean. The IP68 allows to use these platforms in challenging industrial environment and at direct contact with water.



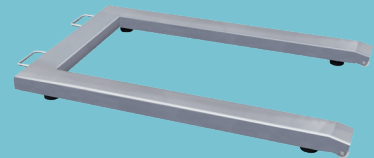
4N Series
waterproof ramp platforms

Low-profile platforms made of AISI304 stainless steel, and equipped with two ramps. They are perfect solution for weighing loads transported using trolleys. The IP68 allows to use these platforms in challenging industrial environment and at direct contact with water.



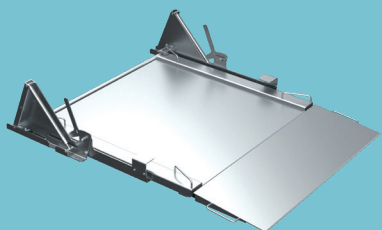
4P.C Series
pallet platforms

The pallet platforms are made of St3S structural carbon steel and protected against corrosion via powder coating. The platforms are intended for weighing products on transport pallets and enable easy loading of the weighing pan using a forklift. The IP65 allows to use these platforms in dry environment.



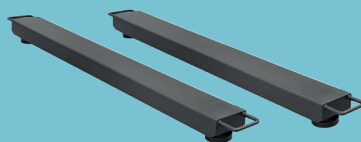
4P.H Series
waterproof pallet platforms

The pallet platforms are made of AISI304 stainless steel. The platforms are intended for weighing products on transport pallets and enable easy loading of the weighing pan using a forklift. The IP68 allows to use these platforms in challenging industrial environment and at direct contact with water.



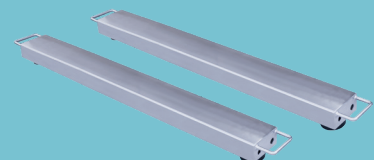
4N.LD Series
waterproof ramp platforms with lifted
weighing pan

Solid and robust platforms made of acid-resistant AISI316 stainless steel. The platforms use stainless steel load cell of an increased ingress protection. The IP68 allows to use these platforms in challenging industrial environment, at direct contact with water and corrosive substances.



4P2.C Series
beam platforms

The beam platforms are made of St3S structural carbon steel and protected against corrosion via powder coating. They are designed for weighing objects of atypical and unfixed size. The set contains 2 beams and enables their spacing to up to 5 m. The IP65 allows to use these platforms in dry environment.








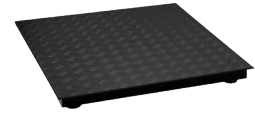

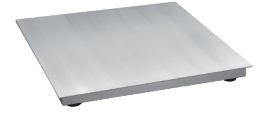

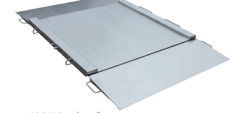



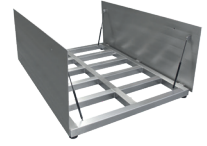






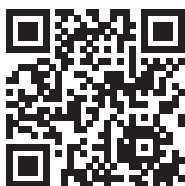
4P2.H Series
waterproof beam platforms

The beam platforms are made of AISI304 stainless steel. They are designed for weighing objects of atypical and unfixed size. The set contains 2 beams and enables their spacing to up to 5 m. The IP68 allows to use these platforms in challenging industrial environment and at direct contact with water.

HX7 Scales – Specification

Maximum capacity [Max]
Readability [d]
Minimum capacity [Min]*
Maximum possible readability for non-verified scales
1-load-cell
4-load-cell*

1-LOAD-CELL SCALES		Group	Model	Material	Platform	
 +  F1 platform / C platform	Platform scales	HX7.F1	St3S / AISI304	300 × 300 mm		
		HX7.C2	St3S / AISI304	400 × 500 mm		
		HX7.C3	St3S / AISI304	500 × 700 mm		
 +  H platform	Waterproof platform scales	HX7.H1	AISI304	150 × 200 mm		
		HX7.H2	AISI304	250 × 300 mm		
		HX7.H3	AISI304	410 × 410 mm		
		HX7.H4	AISI304	500 × 500 mm		
		HX7.H3/5	AISI304	400 × 600 mm		
		HX7.H5	AISI304	600 × 600 mm		
		HX7.H6	AISI304	800 × 800 mm		
 +  HR platform	Waterproof and acid-resistant platform scales	HX7.HR2	AISI316	250 × 300 mm		
		HX7.HR3	AISI316	410 × 410 mm		
		HX7.HR4	AISI316	500 × 500 mm		
		HX7.HR3/5	AISI316	400 × 600 mm		
		HX7.HR5	AISI316	600 × 600 mm		
4-LOAD-CELL SCALES		Group	Model	Material	Platform	
 +  4C platform	Platform scales	HX7.4.C6	St3S	800 × 800 mm		
		HX7.4.C7	St3S	1000 × 1000 mm		
		HX7.4.C8	St3S	1200 × 1200 mm		
		HX7.4.C8/9	St3S	1200 × 1500 mm		
		HX7.4.C9	St3S	1500 × 1500 mm		
		HX7.4.C10	St3S	1500 × 2000 mm		
		HX7.4.C11	St3S	2000 × 2000 mm		
		 +  4H platform	Waterproof platform scales	HX7.4.H6	AISI304	800 × 800 mm
				HX7.4.H7	AISI304	1000 × 1000 mm
				HX7.4.H8	AISI304	1200 × 1200 mm
HX7.4.H8/9	AISI304			1200 × 1500 mm		
HX7.4.H9	AISI304			1500 × 1500 mm		
HX7.4.H10	AISI304			1500 × 2000 mm		
 +  4N.H platform	Waterproof ramp scales	HX7.4N.H1	AISI304	840 × 860 mm		
		HX7.4N.H2	AISI304	1100 × 1200 mm		
		HX7.4N.H3	AISI304	1200 × 1500 mm		
		HX7.4N.H4	AISI304	1500 × 1500 mm		
 +  4N.H.LD platform	Waterproof ramp scales with lifted platform	HX7.4N.H1.LD	AISI304	840 × 860 mm		
		HX7.4N.H2.LD	AISI304	1100 × 1200 mm		
		HX7.4N.H3.LD	AISI304	1200 × 1500 mm		
		HX7.4N.H4.LD	AISI304	1500 × 1500 mm		
 +  4H/Z platform	Waterproof embedded scales with opened platform	HX7.4.H6/Z	AISI304	800 × 800 mm		
		HX7.4.H7/Z	AISI304	1000 × 1000 mm		
		HX7.4.H8/Z	AISI304	1200 × 1200 mm		
		HX7.4.H8/9/Z	AISI304	1200 × 1500 mm		
		HX7.4.H9/Z	AISI304	1500 × 1500 mm		
		HX7.4.H10/Z	AISI304	1500 × 2000 mm		
 +  4P.C platform / 4P2.C platform	Pallet and beam scales	HX7.4P.C	AISI304	840 × 1200 mm		
		HX7.4P2.C	AISI304	1200 mm length		
		HX7.4P2.C1	AISI304	2000 mm length		
		HX7.4P2.C2	AISI304	2500 mm length		
 +  4P.H platform / 4P2.H platform	Waterproof pallet and beam scales	HX7.4P.H	AISI304	840 × 1200 mm		
		HX7.4P2.H	AISI304	1200 mm length		
		HX7.4P2.H1	AISI304	2000 mm length		
		HX7.4P2.H2	AISI304	2500 mm length		



RADWAG Balances and Scales

POLAND, 26-600 Radom, Toruńska 5
e-mail: export@radwag.com
www.radwag.com