

Installation manual

E2R SYSTEM Program

Manual number:
ITKI-15-02-03-14-PL



MANUFACTURER OF ELECTRONIC WEIGHING EQUIPMENT

**RADWAG, 26 – 600 Radom, 28 Bracka Street
POLAND**

phone +48 48 38 48 800, phone/fax. +48 48 385 00 10

Sales Department +48 48 366 80 06

www.radwag.pl

Contents

1. SOFTWARE INSTALLATION	3
1.1. Database.....	3
1.2. System requirements	4
1.3. Installation.....	5
1.4. Updating.....	13
2. PROGRAM CONFIGURATION	14
2.1. E2R SYNCHRONIZER	14
2.1.1. E2R SYNCHRONIZER SERVICE – Windows Services.....	14
2.1.1.1. E2R Synchronizer service activation	16
2.1.1.2. Restart E2R Synchronizer service.....	17
2.1.1.3. Uninstalling E2R Synchronizer service.....	18
2.1.2. E2R SYNCHRONIZER server parametres.....	18
2.1.3. Adding new scales	21
2.1.4. Removing and edition of the already existing scale.....	25
2.1.5. Global settings and Scale settings	26
2.2. E2R MANAGER.....	29
2.2.1. Settings of connection with E2R SYNCHRONIZER	31
2.2.2. Scales configuration.....	33
2.2.2.1. Scales.....	33
2.2.2.1.1 Adding the scale	34
2.2.2.1.2 Scale edition	35
2.2.2.1.3 Scale removing	36
2.2.2.1.4 Scale options	36
2.2.2.2. Global options.....	40
2.2.3. Server	43
2.2.3.1. Restart local synchronizer	44
2.2.3.2. Send messages to scales.....	44
2.2.4. Symbol and status of scales in E2R Manager.....	45
2.2.5. Connection restart and scales update in E2R Manager.....	45
3. E2R SYSTEM	46
3.1. Program startup	46
3.1.1. Module selection	46
3.1.2. DEMO box	47
3.1.3. Module activation	48
3.2. Program settings.....	51
3.2.1. Database.....	51
3.2.1.1. Configure connection.....	52
3.2.1.1.1 Database copy.....	53
3.2.1.1.2 Restore the latest copy of the database.....	54

1. SOFTWARE INSTALLATION

1.1. Database

The installed database motor is MS SQL Express 2008 R2.
E2R SYSTEM database on a new computer is always created on a system disc.

NOTE!

Constraints of a free version MS SQL Express 2008 R2 :

- Service of one multi-core processor,
- Max **1 GB** of operational RAM,
- Max **10 GB** for every database.

Record size in SQL database:

Product record	-	0,8 - 2 KB
Operator record	-	0,2 - 0,5 KB
Weighment record in E2R WEIGHING RECORDS	-	1,2 - 2,5 KB
Weighment record in E2R CPG	-	1,2 - 2,5 KB
Weighment record in E2R WEIGHING	-	0,2 - 0,5 KB
Weighment record in E2R CHECKWEIGHER	-	0,2 - 0,5 KB

Max number of weighments records in a database depending on the module

Weighment record in E2R WEIGHING RECORDS	-	4 000 000 - 8 000 000
Weighment record in E2R CPG	-	4 000 000 - 8 000 000
Weighment record in E2R WEIGHING	-	20 000 000 - 50 000 000
Weighment record in E2R CHECKWEIGHER	-	20 000 000 - 50 000 000

NOTE!

Max number of records depends also on other tables size in a database, therefore, the real records number might vary from the determined number.

1.2. System requirements

For the proper operation of the system the required **server**:

- Works in operational system :
 - Windows 7 (excluding Starter version);
 - Windows Server 2003 Service Pack 2;
 - Windows Server 2008 Service Pack 2;
 - Windows Server 2008 R2;
 - Windows Vista Service Pack 2;
 - Windows XP SP 3,
- **Four core** processor **3 GHz** or faster,
- Operational memory **8 GB** or larger,
- At least **20 GB** free space on hard disc,
- At least 1280x1024 pixel screen,
- DVD drive,
- Printer working in Microsoft Windows system,
- Default size of system font (96 dpi)

For the proper operation of the system on the **computers** in a multi stand version the required computer:

- Works in the operational system:
 - Windows 7 (excluding Starter version)
 - Windows Vista Service Pack 2
 - Windows XP SP 3,
- **Dual-core** processor **2GHz** or faster,
- Operating memory **2 GB** or larger,
- At least **5 GB** free space on hard disc,
- At least 1280x1024 pixel screen,
- DVD drive,
- Printer working in Microsoft Windows system,
- Default size of system font (**96 dpi**)!

NOTE!

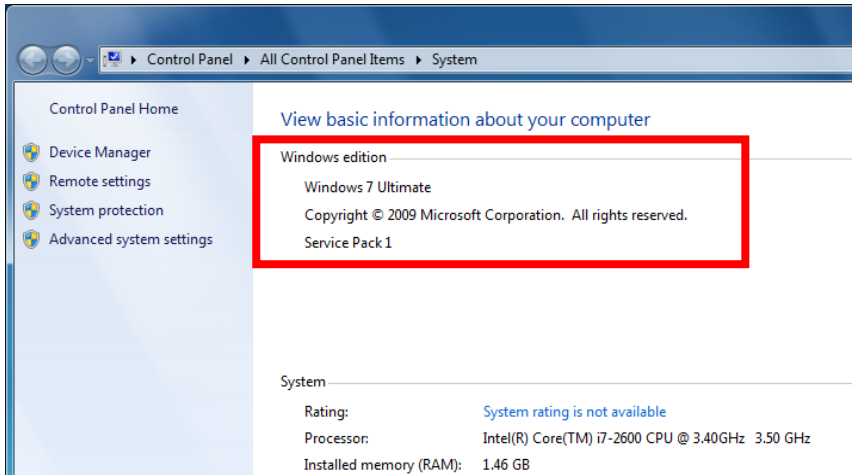
1. *It is not recommended to install other programs on the computer.*
2. *If the program is to be installed on the computer which is not supplied by RADWAG company together with the program (the recipient's ownership), you need to:*
 - *Before installation of a full version of E2R SYSTEM, install the latest version of Service Pack following the requirements,*
 - *When the computer features the full version of MS SQL, install your SQL server (if it is not already done) and attach E2R_SYSTEM database (if SQL server has been installed).*
3. *If the program is installed on the user's computer, all the hardware and software programs are on the user's part.*
4. *RADWAG company does not bear responsibility for:*
 - *Possible influence of E2R SYSTEM and SQL server on other programs which have been installed on the computer (if any programs are installed),*
 - *Disturbances in E2R SYSTEM and SQL server operation caused by other programs installed on this computer (system overload).*

1.3. Installation

Before the installation, you need to check the updated version of the system. If your version does not fulfill the requirements, you need to update the operating system version with a proper **Service Pack** supplement.

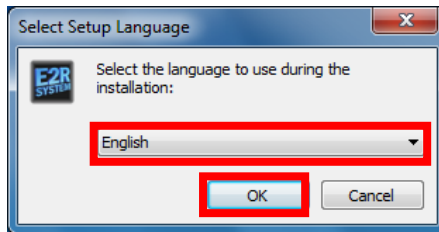
The supplements are available on Microsoft webpage <http://windows.microsoft.com/pl-pl/windows/service-packs-download#sptabs=xp>.

After the download and installation of the official supplement from the given webpage , you need to install **E2R SYSTEM**.



The manual features the installation version „**E2R SYSTEM 13.08.28**”.

After the file installation you will see a dialog box which enables the installation language selection:



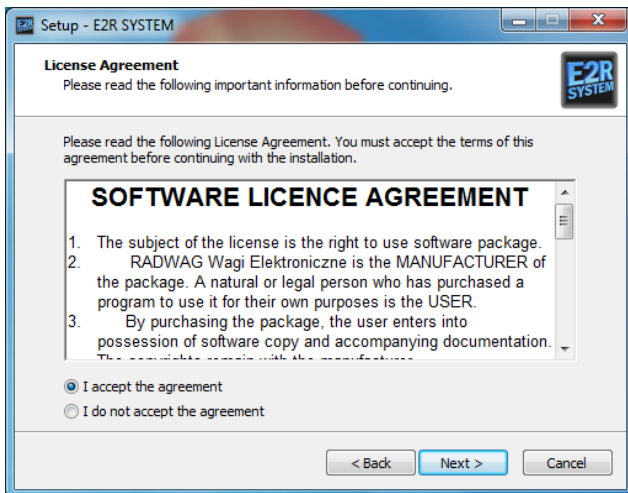
Accept the language selection with ‘**OK**’ button.
In the further part of the installation, follow the instructions displayed in the boxes.

Installation welcome box:



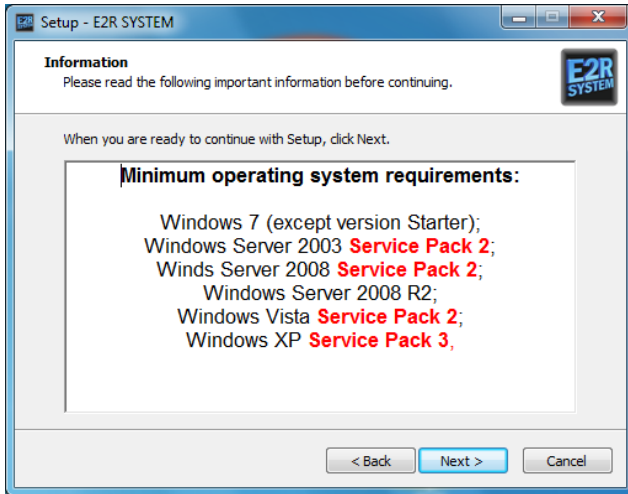
In order to go on, press button 'NEXT'.

Licence agreement box:



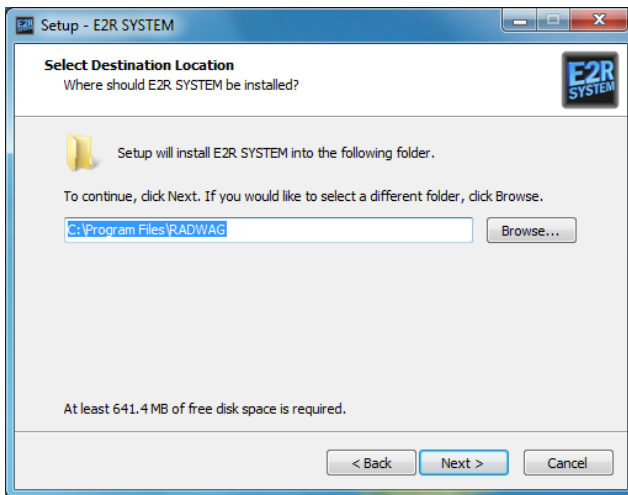
Accept the agreement conditions and press 'NEXT' button.

The operation system requirements information box:



Press 'NEXT' button.

Installation path selection box

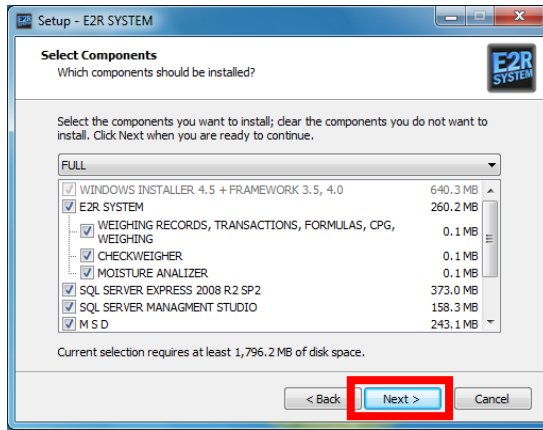


Select the program localization in the box (do not change the path), then press button **'NEXT'**.

NOTE:

The system partition, usually **disc-C** needs to have approximately 3GB of free capacity in order to install **E2R System** properly.

Installation components selection box:



In the box select the components that will be installed (all elements necessary for installation on the server are enabled by default), and press **'NEXT'** button.

E2R SYSTEM installation types:

BASIC / SERVER	-	Full server installation of the software, database, synchronizer, manager and MSD (Data Synchronization Mechanism). One licence can be installed on one computer/server.
WINDOWS INSTALLER 4.5 + FRAMEWORK 3.5, 4.0	-	Installation of system components inevitable for using the software.

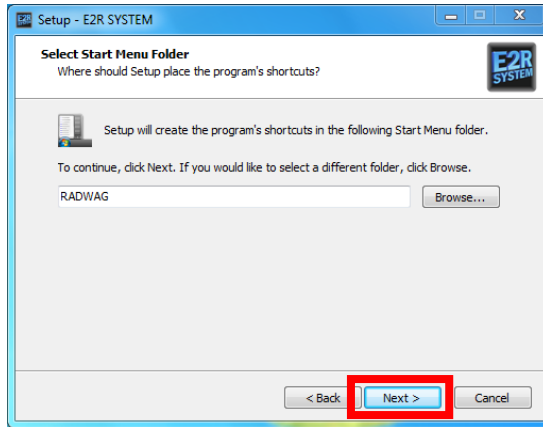
CLIENT / ONLY E2R SYSTEM	-	The Software installation version with the on-line monitoring, intended for installation on additional computers in the network
ONLY DATABASE	-	Installation of MS SQL Express 2008 R2 databases motor
ONLY E2R SYNCHRONIZER	-	Only Synchronizer and Manager installation. In ER2 System one Synchronizer and Manager can work at the same time.
ONLY DATA SYNCHRONIZING MODULE	-	Installation of database synchronization module for the data exchange with external programs.
USER	-	Selected installation version manually set up by the user.

E2R SYSTEM selection options:

REGISTERING, TRANSACTIONS, RECIPES, CPG, WEIGHMENTS	-	Selection of all modules included in E2R SYSTEM for industrial scales.
CHECKWEIGHER	-	E2R CHECKWEIGHER module selection
MOISTURE ANALYZER	-	E2R MOISTURE ANALYZER module selection
DWS	-	E2R DWS (VEHICLE) module selection

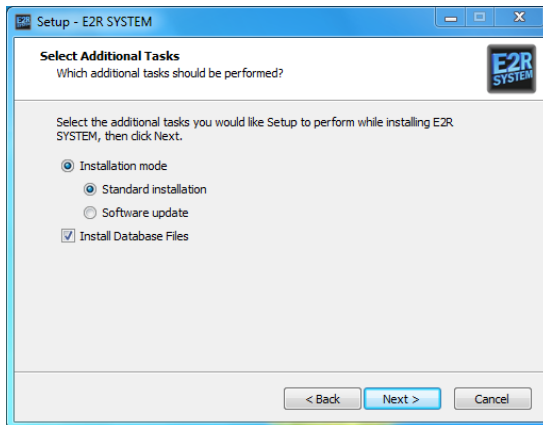
SQL SERVER MANAGEMENT STUDIO is installed by default, if not used, it can be unmarked. This element is used for database managing and is not necessary for the full functioning of E2R SYSTEM.

Menu Start folder selection box:



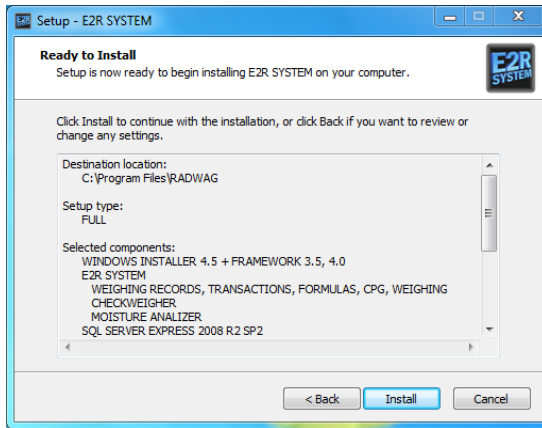
Press 'NEXT' button.

Additional tasks box during installation:



Select additional tasks to do during the module installation in the box. If **E2R SYSTEM** has already been installed, it is not necessary to **install Database Files**. When the tasks are selected, press 'NEXT.'

Box ready for installation:



Press **'INSTALL'** to start the installation process.

Program installation finish box:



When the installation is complete, it is necessary to restart the computer and this option is selected by default.
Press **'FINISH'** to stop.

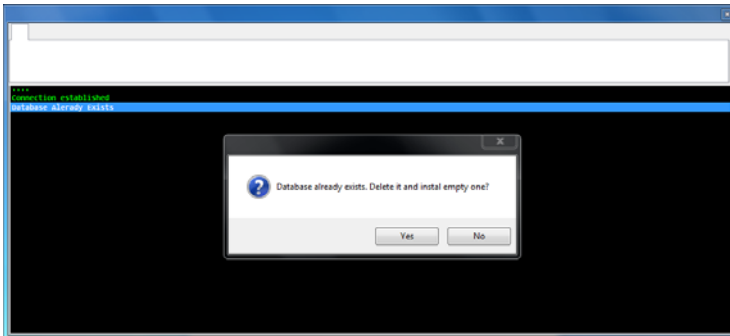
During the software installation the following elements are also installed:

- E2R_System (SQL base) database,
- E2R Synchronizer,
- E2R Manager,
- Moisture analyzer on-line monitoring,
- MSD.

1.4. Updating

When the program installer is activated, **E2R synchronizer** service is automatically stopped and uninstalled. When the actualization process is over, the service startup is activated automatically.

During the update follow the program installation instruction. In the final stage of installation, in the below box select whether to leave the database unchanged, or to install a new empty database.



CAUTION!

Pressing YES button will remove all the data from the current database.

Pressing NO button will leave the database intact.

During the installation all settings will be set up to default, together with the license for the full version.

2. PROGRAM CONFIGURATION

Another operation inevitable for the proper operation of **E2R SYSTEM** is, among others, the scale configuration in the system. It can be carried out in two ways: in a simple way, using **E2R MANAGER** or **E2R SYNCHRONIZER ADMIN**.

It is recommended to configure the scale by means of **E2R MANAGER** available in the software (**online preview** option) after logging in or in the start menu directly.

2.1. E2R SYNCHRONIZER

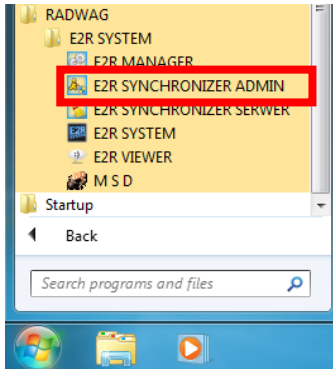
E2R Synchronizer is intended to transfer the registered measurements to **MS SQL** databases and monitoring the scale condition based on PUE 7 and PUE HY indicators.

The program does not require the user interference after the proper configuration. It activates automatically together with Windows system (logging in is not required). After activation it gets connected with the selected database and collects the data from the selected scales.

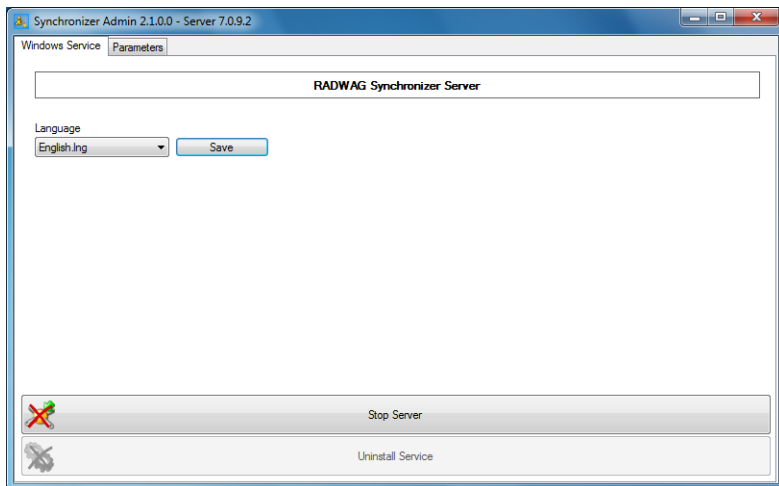
2.1.1. E2R SYNCHRONIZER SERVICE – Windows Services

In the main box of program **E2R SYNCHRONIZER (SynchAdmin.exe)** you will find the program language options and **Radwag Synchronizer** managing buttons.

After **E2R SYSTEM** installation, in the menu bar you will see the program shortcut.



The main program box:



In the top bar of the application there is information about the program versions included in **RADWAG Synchronizer**.

The following boxes are displayed:

Install service	Before RADWAG Synchronizer service activation, it should be installed in the MS Windows system.
------------------------	--

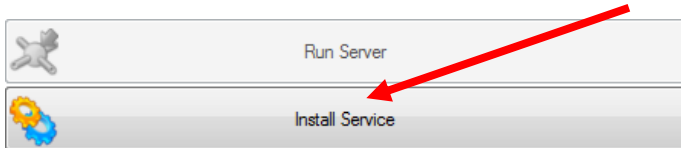
Uninstall service	Uninstalling RADWAG Synchronizer service from the MS Windows system.
Run server	RADWAG Synchronizer service server activation
Stop server	Stopping the server responsible for communication with scales.
Language	Language selection box, the following languages are available: Polish, English, Spanish and Russian. After changing the language it is necessary to restart the program.
Save	The selected language saving. Note: the language is changed only after the program restart.

CAUTION:

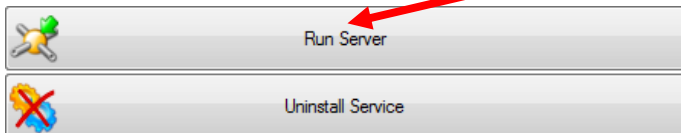
During installation, uninstallation, activating and stopping the service the buttons names and their availability is set up automatically.

2.1.1.1. E2R Synchronizer service activation

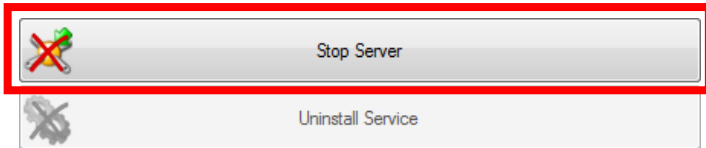
- Press **Install service** button.



- Press **Run Server** button.

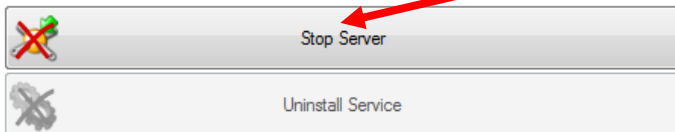


- On the server activation, you will see the **Stop Server** button, which means it was successfully activated.

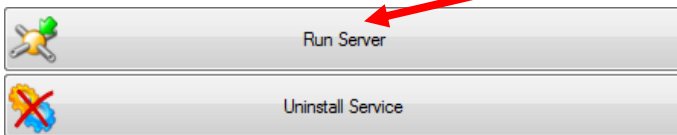


2.1.1.2. Restart E2R Synchronizer service

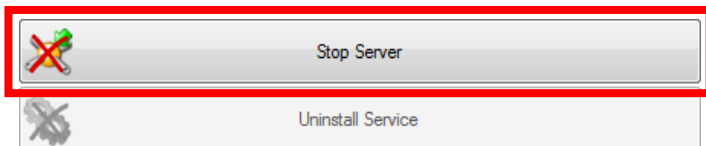
- Press **Stop Server** button.



- After 5 seconds press **Run Server** button.

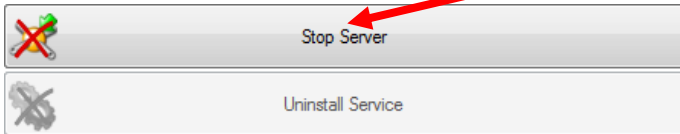


- On activating the server, you will see **Stop Server** button, which means it was successfully activated.

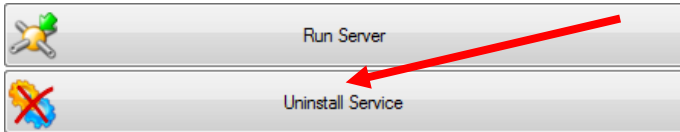


2.1.1.3. Uninstalling E2R Synchronizer service.

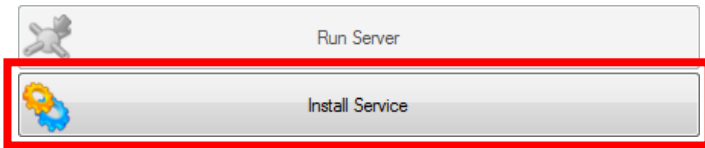
- Press **Stop Server** button.



- Press **Uninstall service** button.



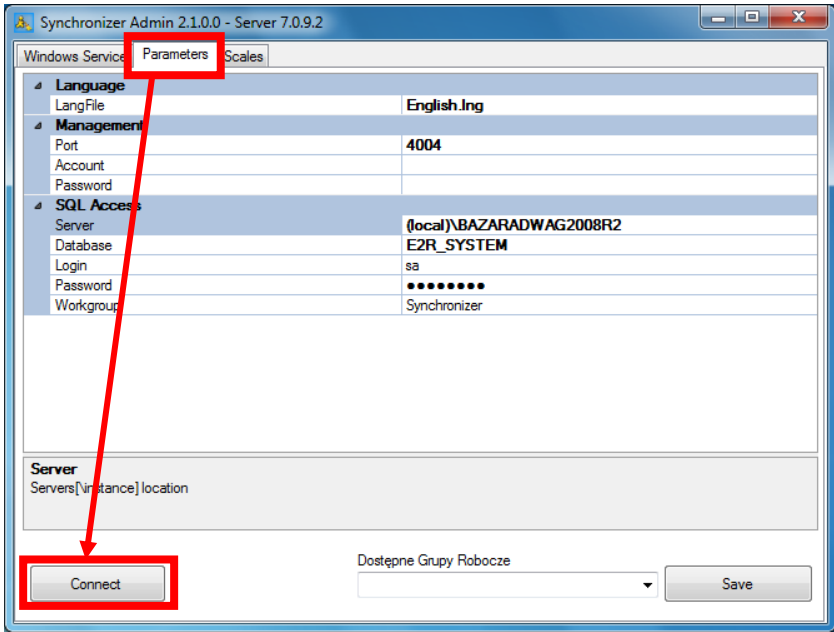
- On the uninstalling service completion, you will see **Install service** button.



2.1.2. E2R SYNCHRONIZER server parametres

In **Parametres** bookmark set up parametres of the MSSQL server with which the scales are connected.

On the program installation move to **Parametres** bookmark.



Connect with the database to configure the scales, press **Connect** button.

Parametres bookmark:

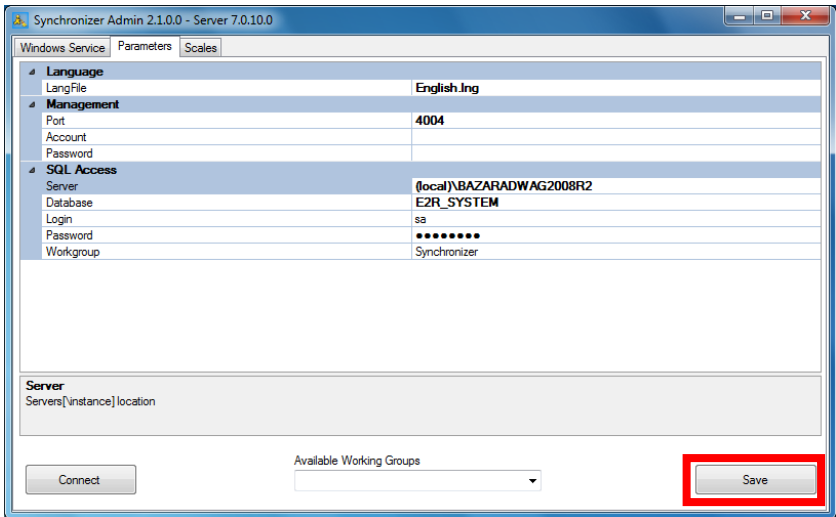
Server	Access path to SQL server. Local server by default: 127.0.0.1\BAZARADWAG2008R2
Database	Database name, by default: E2R_SYSTEM
Login	The database user name; by default: sa
Password	User password, by default: Radwag99
Workgroup	Scales workgroup used for complex systems. By default: Synchronizer.

File	Scale messages language selection.
TCP Port	TCP port used by E2R Manager. By default: 4004 .
Login	The E2R Manager program user name. By default: blank , no safety lock.
Password	The E2R Manager program user password. By default: blank , no safety lock.

Caution:

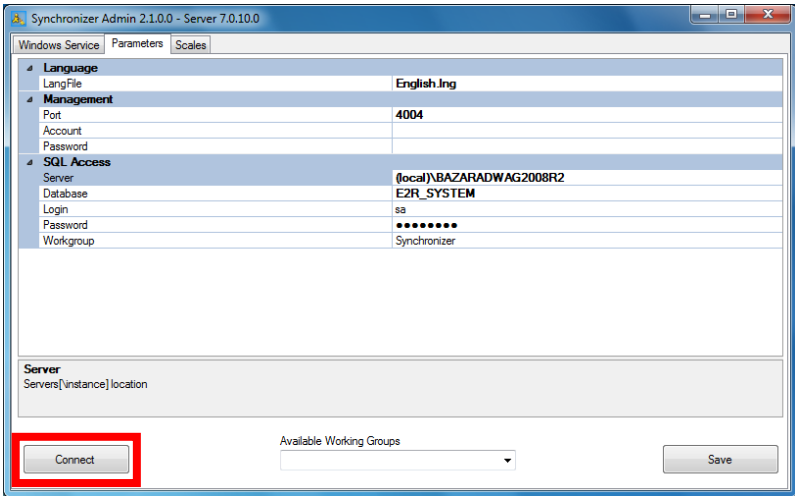
If the SQL database is installed on another computer, insert this computer IP in the **Server** box, e.g.: **192.168.1.1\BAZARADWAG2008R2**

On doing all the changes in the Parametres bookmark, press **Save** button.

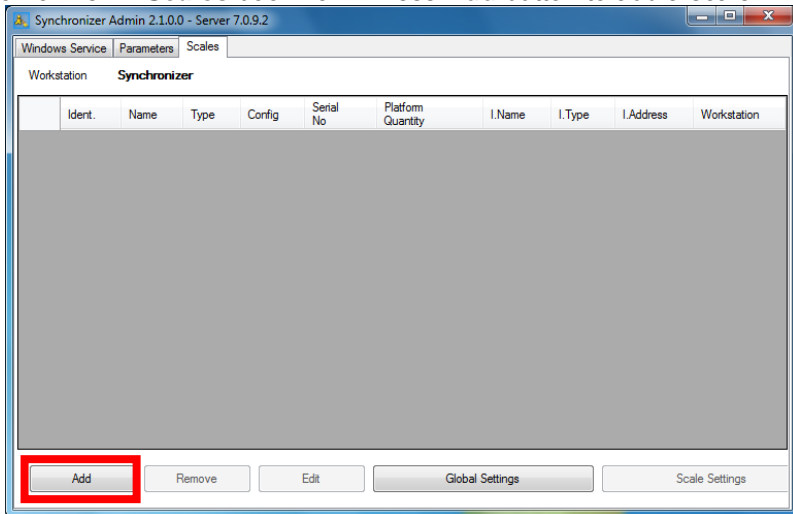


2.1.3. Adding new scales

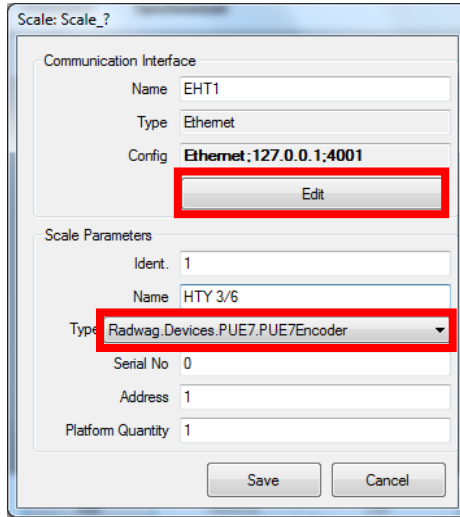
In order to configure the scales, connect with the database pressing **Connect** button.



After connecting with the database, it is possible to add new scales to Synchronizer in **Scales** bookmark. Press **Add** button to add a scale.



On pressing the button the scale edition box which should be filled in following the below screenshot. Adding a new scale is shown on the example of HTY scale. Other scales that should be synchronized with **E2R System** are added in the same way.



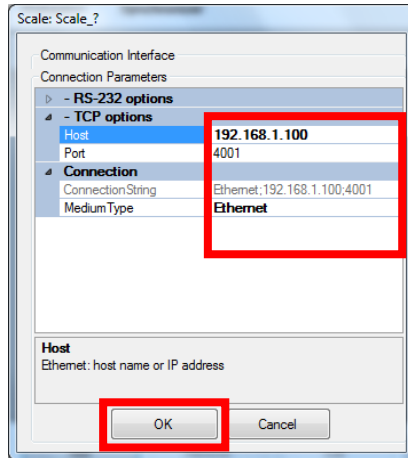
The scale settings:

Name	A communication interface name
Type	Interface type box (serial, Ethernet)
Config	Interface configuration box
Edition	Interface edition button
Ident.	The scale serial number (<i>unique numeric box</i>)
Name	The name of scale presented in the reports

Type	Type of connection with the scale: <ul style="list-style-type: none"> • <i>Radwag.Devices.PUE7.PUE7Encoder</i> – Connection of industrial scales WLY, WPY and HTY series with the standard program, • <i>Radwag.Devices.PUE7.PUE7KtpEncoder</i> – Connection of industrial scales WLY, WPY and HTY series in the CPG mode, • <i>Radwag.Devices.PUE7.PUE7PcsEncoder</i> – connection with scales based on PUE7 and HY indicator (version with a special program of parts counting), <i>It does not concern the standard program of parts counting mode.</i> • <i>Radwag.Devices.PUE41.PUE41Encoder</i> – Connection with PUEC41H indicator, • <i>Radwag.Devices.PUE7Lab.PUE7LabEncoder</i> – Connection with a 3Y laboratory scale, • <i>Radwag.Devices.PUE7Lab.Y3KTPEncoder</i> – Connection with a 3Y laboratory scale in the CPG mode, • <i>Radwag.Devices.DynWin.DynWinEncoder</i> – connection with a dynamic scale, • <i>Radwag.Devices.WeightDryer.WeightDryerEncoder</i> – connection with a MAX or PMC series moisture analyzer, • <i>Radwag.Devices.PUE4L.PUE4LEncoder</i> – connection with scales based on PUE4L indicator,
Serial Nr.	The scale serial number
Adres	Address set up for the scale, by default 1.
Numer platformy	Platform number, by default 1.

For a HTY scale select the following setting in the box **Type**:
Radwag.Devices.PUE7.PUE7Encoder.

Using **Edit** button, activate the box in which you can set up the communication interface parameters with the scale.



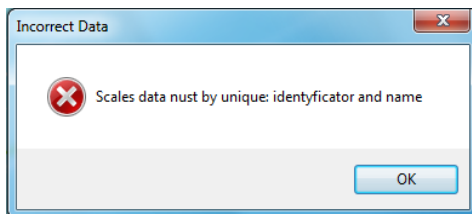
The interface settings:

Connection type	Connection type (None – without the connection, Serial – the scale connected by RS232, Ethernet – the scale connected by Ethernet)
Connection String	The connection shortened address, configuration
Host/IP	IP address set up for the scale (for connection like Ethernet),
Port	TCP Port set up for the scale (by default 4001)
Baud rate	Baud rate RS232 (by default for moisture analyzer 9600 bps , for WPW, WLY, WPY, HTY scales set up 115200 bps)
Data bits	Data bits (by default DB_8)
Handshake	Protocol control for recognizing communication (by default None)
Parity	Parity control (by default None)
Port name	Computer port number COM1, COM2, ...
Stop bits	Stop bits (by default One)

Caution:

All the above settings should be checked with the scale settings and communication port from MS Windows System.

If during a scale adding (on pressing **Save** in the scale adding box) the below message is displayed, it means that the inserted **ID** already exists in the database.

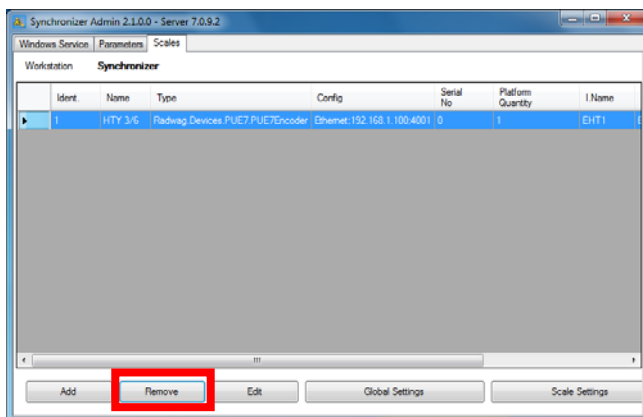


In this case you need to change the scale **ID** and press **Save** again.

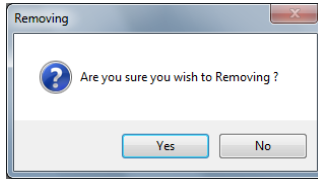
2.1.4. Removing and edition of the already existing scale

If the scale does not work in the system, it is possible to remove it from the system so that it should not be considered during the synchronization process. In all the reports and weighments where this scale is active, a blank box will be displayed.

Mark the scale you want to remove and press **Remove** button.



On pressing **Remove** you will see a request:



The repeated request minimizes the risk of accidental removing the scale from the Synchronizer. On pressing **Yes** the scale will be removed from the Synchronizer list.

Edit button opens the selected scale box (the same like by adding a new scale) and allows to change the selected scale settings in the Synchronizer.

2.1.5. Global settings and Scale settings

CAUTION:

Some parametres are intended for service and were described in the service manual.

Below you will find the critical function settings for the correct functioning of the Synchronizer and the parametres expanding functionality together with the parametres settings description.

The most important global settings:

Parameter	Default value	Description
pue41Oper_id2kod	0	Setting value 1 will send to PUE_C41 scale ID from the database instead the code. It is used when the operator's code is longer than 6 characters; the operator's code for the scale cannot be longer than 6 characters.

pue41Towary_id2kod	0	<p>Setting value 1 will send to PUE_C41 scale ID from the database as the scale code;</p> <ul style="list-style-type: none"> The name of product on the scale = the name of product from the computer The code of product on the scale = ID name of product from the computer <p>It is used when the operator's code is longer than 6 characters; the operator's code for the scale cannot be longer than 6 characters.</p>
pue41Towary_id2kod_MixName	0	<p>Setting value 1 will send PUE_C41 to the scale and use on the scale the ID from the database as a code on the scale together with the name change for the name with the ID at the beginning</p> <ul style="list-style-type: none"> The product on the scale name = ID of product from the computer + name of the product from the computer Code of the product on the scale = ID of product from the computer (the code cannot be longer than 6 characters) <p>Used when the products names are identical on the computer; the products names on the scale must be unique</p> <p>The option works if you set up 1 for pue41Towary_id2kod.</p>
Synch_Towar MasaEnabled	0	Setting the parametre on value 1 will turn on update of the mass standard from all scales
Synch_Towar MinMaxEnabled	0	Setting the parametre on value 1 will turn on update of thresholds from all scales
Synch_Towar TaraEnabled	0	Setting the parametre on value 1 will turn on update of the tare value from all scales
Synch_Towar UpdateEnabled	0	Setting the parametre on value 1 will turn on the update service from all scales to the database

Synch_LososTara	0	Setting the parametre on value 1 will turn on the function of product tare restoring from the database after the WPW scale clearing.
pue41_licznik_reset	0	Setting the parametre on value 1 will reset the statistics on WPW scales.
Pue5OrderPermit	1	In the parametre value 1 sets up the orders synchronizations on PUE5 terminal
Pue5Transaction Permint	1	In the parametre value 1 sets up the transactions synchronizations on PUE5 terminal

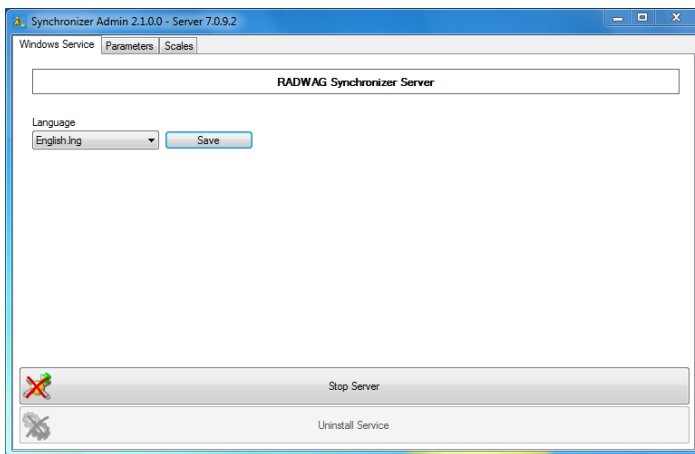
The scale button parametres:

Parameter	Default value	Description
ew_wazenia	0	Weighments from this scale will be saved to the database table: 0 - ew1_wazenia (for modules E2R Registering, E2R Transactions and E2R Recipes); 1 – ew_wazenia (E2R Weighments)
Synch_Towar MasaEnabled	0	Setting the parametre on value 1 will turn on update of the mass standard on this scale
Synch_Towar MinMaxEnabled	0	Setting the parametre on value 1 will turn on update of the thresholds on this scale
Synch_Towar TaraEnabled	0	Setting the parametre on value 1 will turn on update of the tare value on this scale
Synch_Towar UpdateEnabled	0	Setting the parametre on value 1 will turn on the update function on this scale
ReconnectTimeout OnNoRespond	0	Parametre determining the max time of scale no reply; after this period the scale will be disconnected and reconnected to the Synchronizer (the scale Reconnect). The time is counted in milliseconds; <u>The parametre value:</u> 0 – parametre turned on, 1-60 - max time of scale no reply

Control lamp	0	Setting the parametre on value 1 will set up PUE4-L scale working mode as a controlling scale
progi_z_reki	0	Setting the parametre on value 1 will use the thresholds set manually on the scale and not the thresholds from the product.

On introducing all the changes (adding scales and parametres changes), restart the server following issue 2.1.1.2. of the user manual.

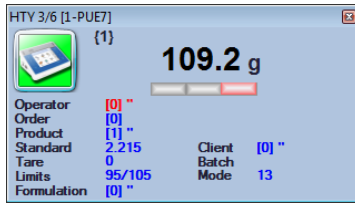
After saving the changes, move to **Windows Service** bookmark and check if **RADWAG Synchronizer Server** works properly.



If the server is active, the on-line preview of the scales connected by means of **E2R Manager** program will be available.

2.2. E2R MANAGER

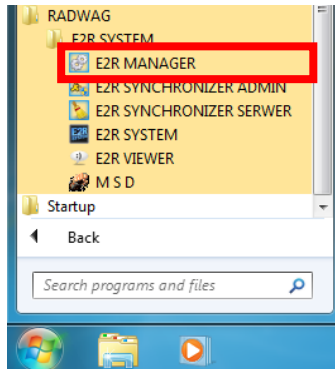
E2R Manager program is intended for displaying the condition of communication with scales, monitoring the scale condition.



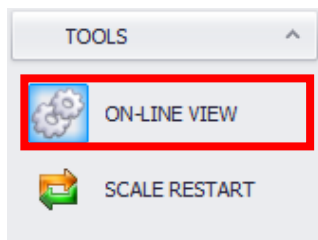
All messages are only informative, which makes it impossible to save or print them out.

This user manual features only the button options regarding configuration; the further information is described in the user manual of every program module.

After installing **E2R SYSTEM**, in the start bar the shortcut to the program will be created.

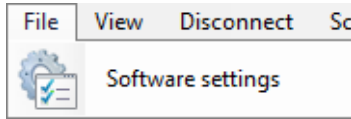


Besides, on pressing option Scale Preview, the program is available in **E2R SYSTEM**.

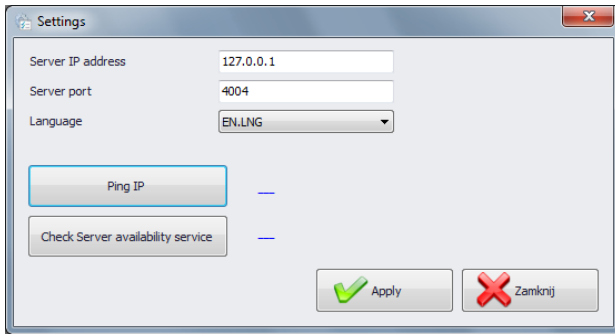


2.2.1. Settings of connection with E2R SYNCHRONIZER

Box of settings activated from option **File, Software Settings**.



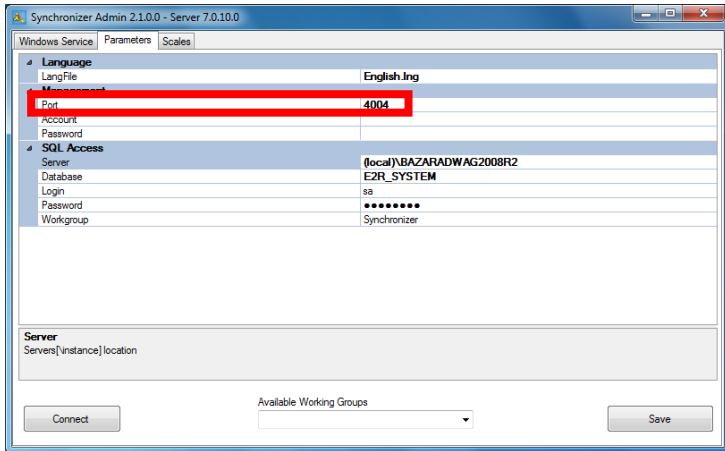
In the box set up the address and the computer **communication port** where the service of communication with scales (server) was activated.



Server IP address	Computer IP address where Synchronizer is activated
Server port	Computer TCP port where Synchronizer is activated
Language	E2R Manager program language
Ping IP	Checking the connection with the selected IP address. By default: IP local address
Check server availability	Checking E2R Synchronizer program availability

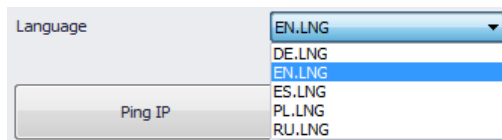
If **E2R SYNCHRONIZER** is installed on the same computer as **E2R MANAGER**, do not change the default IP address **127.0.0.1**.

Change the default port of server 4004 only when it was earlier changed in **E2R SYNCHRONIZER**, according to the below screenshot.



It is also possible to change the language, in option **Language**.
The following languages are available:

- PL** Polish
- EN** English
- DE** German
- ES** Spanish
- RU** Russian

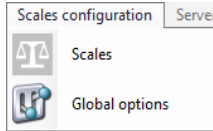


On introducing the changes, save them pressing the button **Save** and turn off the program. All changes will be introduced after the computer restart.

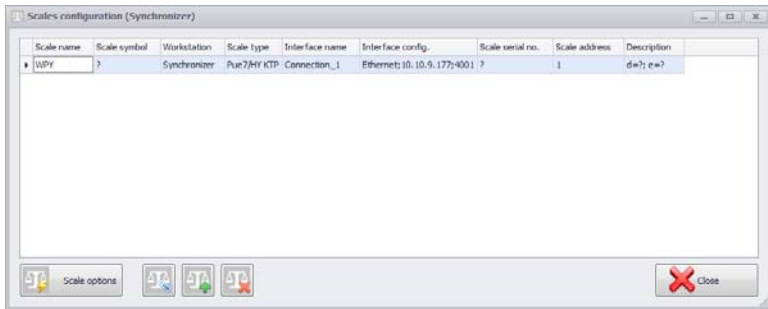
2.2.2. Scales configuration

2.2.2.1. Scales

Configuration of scales is carried out on selecting option **Scale** in the menu **Scales configuration**.



A list of scales working in the system is displayed in the box **Scales configurations (Synchronizer)**.




On the below list mark the scale you would like to edit or remove.

Functions of buttons in the box of scales configuration.

	Edition of the scale selected from the list.
	Adding the scale to the system.
	Removing the scale from the list.
Scale options	Activating the box Scale options
	Closing the box Scales configurations



2.2.2.1.1 Adding the scale



In the configuration box press the button , next in the box below fill in all required blanks.


Scale name	A scale name presented in the reports
Service type	<p>Type of connection with the scale:</p> <ul style="list-style-type: none"> • <i>WPW/PUEC41</i> – connection with PUEC41H indicator, • <i>Pue7/HY</i> – connection of industrial scales WLY, WPY and HTY series with a standard program, • <i>3Y Lab</i> – connection with laboratory scale 3Y series, • <i>Pue7/HY KTP</i>– connection with industrial scales WLY, WPY and HTY series in CPG mode, • <i>3Y KTP</i> – connection with laboratory scale 3Y series in CPG mode, • <i>DynKTP</i> – connection with the dynamic scale, • <i>MAX</i> – połączenie z wagosusząrką serii MAX, PMC, • <i>Pue4 Land</i> – connection with scales based on PUE4L indicator, • <i>Pue7 PCS</i> – connection with scales based on PUE4L and HY indicator (version with a special program of part counting) <p><i>It does not concern the standard program of parts counting mode.</i></p>

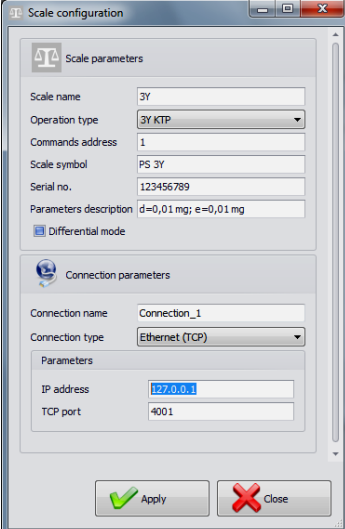
Order address	Address set up on the scale, by default 1.
Scale symbol	The scale symbol on the scale overlay, required among others in the CPG system.
Serial number	The scale serial number.
Parametres descriptions	The box for the scale parametres: Max, Min, d, e. Required among others in the CPG system.
Connection name	A name of communication interface.
Connection type	Selection of interface type connected with the scale: Serial – scale connected by RS232, Ethernet – scale connected by Ethernet.
IP address	IP address set up in Ethernet interface on the scale,
TCP port	TCP port set up on the scale (by default 4001)



Save the changes pressing  button, or exit the box without saving the changes pressing  button.

2.2.2.1.2 Scale edition


In the configuration box select the scale whose parametres you would like to

configure and press  button.

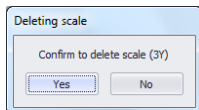


Save the changes pressing  button, or exit the box without saving the changes pressing  button.

2.2.2.1.3 Scale removing

In the configuration box select the scale you would like to remove and press  button.

Confirm the message pressing **YES**.

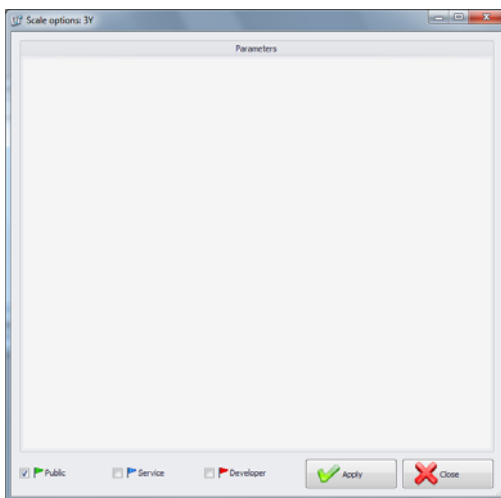
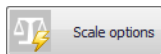


CAUTION!



After removing the scale information about the scale is also removed from the weighing reports, so be careful which scale you remove.

2.2.2.1.4 Scale options

On activating the scale options, three groups of options among others Public, Service and Development are available in the left bottom corner of the box.

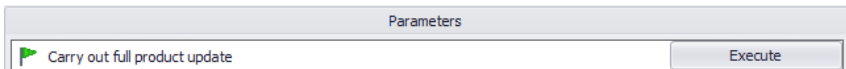
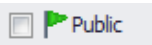


Turning the option on and off using the buttons:

	Option on,
	Option off.

- **Public**

Public options are available by default and their setup does not influence the system work.

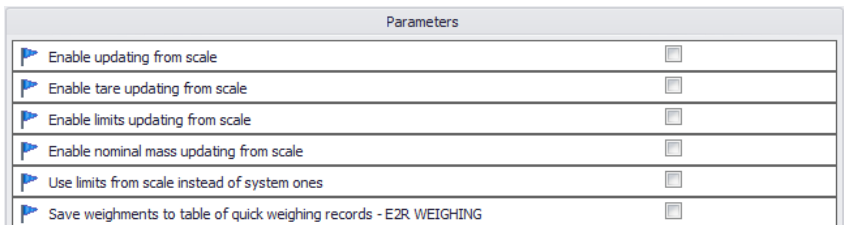
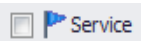


Carry out the full update of products	Forcing the complete update of products on the selected scale
---------------------------------------	---

The update of products on the scales is carried out systematically and using this parameter is not necessary.

- **Service**

Service options are available on pressing **Service** button. Setting up the update options of selected information from the scale to the system must be confirmed in the global options.



Enable updating from scale	Activating the update of tare, thresholds, mass from the selected scale to the system,
Enable tare updating from scale	The product tare update from the selected scale to the system,
Enable limits updating from scale	Update of the product thresholds from the selected scale to the system,
Enable nominal mass updating from scale	Update of the product nominal mass from the selected scale to the system,
Use limits from scale instead of system ones	Option allowing to work with the thresholds set on the scale instead of the system thresholds
Save weighments to quick weighments table - E2R WEIGHING	Registering the weighments to the table of quick weighments in E2R WEIGHING mode,

CAUTION!

Do not mark the options of weighments register to the table of quick weighments in modes REGISTERING, TRANSACTIONS, RECIPES, CPG, MOISTURE ANALYZERS or DYNAMIC.

- Developer

Development (program) options are available on marking the button Development. Options are informative and should not be modified.





Parameters	
Version No. of database of products	0
Version No. of database of operators	0
Version No. of database of clients	0
Scale serial no.	0
High mass limit - MAX	0
Low mass limit - MIN	0
Order ID set on scale	0
Order ID set by system	0
ID of last acquired weighment from PUE7/HY	0
ID of last CPG tare report acquired from PUE7/HY	0
ID of last CPG report acquired from PUE7/HY	0
Product ID set on scale	0
Product ID set by system	0
Status	0
Operator ID set on scale	0
Operator ID set by system	0

Version No ...	No of database version read from the scale, on the basis of this number bases on the scale are synchronized,
Scale serial no	Serial number read from the scale
High mass limit - MAX	Top limit value read from the scale,
Low mass limit – MIN	Bottom limit value read from the scale,
Order ID set by scale	ID of current scale read from the scale,
Order ID set by system	ID of current order from system
Product ID set by scale	ID of product read from scale
Product ID set by system	ID of current product read from system
Operator ID set by scale	ID of current operator read from scale
Operator ID set by system	ID of current operator from system
ID of latest report, weightment ...	No of records saved in the system read from PUE7/HY or 3Y scale. If you assume that weightments or reports are not uploaded despite the automatic algorithm of data uploading from the scale, set up 0 value for the selected base.

CAUTION!

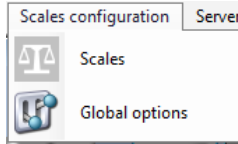
Setting up 0 value for ID of the latest report or weightment will again upload the same weightments from the scale to the database in the system.

All changes must be confirmed pressing  button.

To exit the box without saving changes, press  button.

2.2.2.2. Global options

System configuration can be carried out on selecting **Global options** in menu **Scales configuration**.





In the box **Server global options** you will see a list of available parametres.



On activating the global options, three groups of options among others Public, Service and Development are available in the left bottom corner of the box.


Turning the option on and off using the buttons.

	Option on,
	Option off.

- **Public**

Public options are available by default and their setup does not influence the system work.

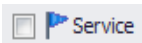















Parameters	
 Carry out connection restart with scales	<input type="button" value="Execute"/>

Carry out connection restart with scales	Forcing the connection restart with scales to update the databases
--	--

- **Service**

Service options are available on pressing **Service**.



Parameters	
 Enable orders only on scale (PUEC41)	<input type="checkbox"/>
 Enable updating from scale	<input type="checkbox"/>
 Enable tare updating from scale	<input type="checkbox"/>
 Enable limits updating from scale	<input type="checkbox"/>
 Enable nominal mass updating from scale	<input type="checkbox"/>
 Restoring tare after zeroing (WPW)	<input type="checkbox"/>
 Synchronizacja transakcji na wadze PUE5	<input checked="" type="checkbox"/>
 Pue5OrderPermit	<input checked="" type="checkbox"/>
 On scale, fill field of product name with code on product name (PUEC41)	<input type="checkbox"/>
 On scale, use product ID instead of Code (PUEC41)	<input type="checkbox"/>
 On scale, use operator ID instead of Code (PUEC41)	<input type="checkbox"/>
 Restart multeafl statistics (PUEC41)	<input type="button" value="Execute"/>
 Counting weighing for every product (WPW)	<input type="checkbox"/>

Enable updating from scale	Option that enables the update of tare, limits, mass from the scale to the system
Enable tare updating from scale	Option that updates the product tare from the scale to the system
Enable limits updating from scale	Option that updates the product nominal mass from the scale to the system
Enable nominal mass updating from scale	Option that updates the product tare from the scale to the system
Restoring tare after zeroing (WPW)	Option that restores the product tare value after zeroing
Synchronization of transactions on scale PUE5	Default option of transaction synchronization with PUE5 terminal
Synchronization of orders on scale PUE5	Default option of synchronization of orders with PUE5 terminal
On scale, fill field of product name with code of product name (PUEC41)	Change on PUEC41 terminal in the field name, after the change (ID + PRODUCT NAME). Option active only when option <i>On scale, use product ID instead of Code</i> is marked
On scale, use product ID instead of Code (PUEC41)	Change on PUEC41 terminal in the field product code, after the change (product ID)
On scale, use operator ID instead of Code (PUEC41)	Change on PUEC41 terminal in the field operator code, after the change (operator ID)
Restart multiteafil statistics (PUEC41)	Zeroing statistics on WPW scale in a special program to CPG
Counting weighing for every product (WPW)	A special function for WPW scale line counting weighing for every product individually

CAUTION!

On WPW scale the field limitation does not allow to create codes longer than 6 characters.

- **Developer**

Developer (program) options are available on pressing Developer. Options are informative and should not be modified.

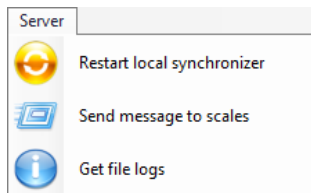


Parameters	
SYNC Server IP Address	10.10.1.26
Version No. of database of products	18
Version No. of database of operators	38
Version No. of database of clients	1

Version no of database ...	No of database version from the system, on the basis of this number databases are synchronized on scales.
----------------------------	---

2.2.3. Server

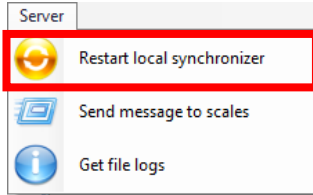
In menu **Server**, connection restart option was made available in order to update the files on scales, and option of sending messages on all scales working in the system.



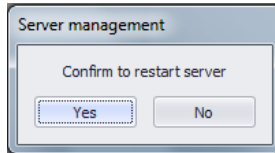
2.2.3.1. Restart local synchronizer

Option available on computer on which **E2R SYNCHRONIZER** is activated. It enables to reload the server configuration and update files on the scales.

In **Server** menu select **Restart local synchronizer**.



Next confirm the message with a request.

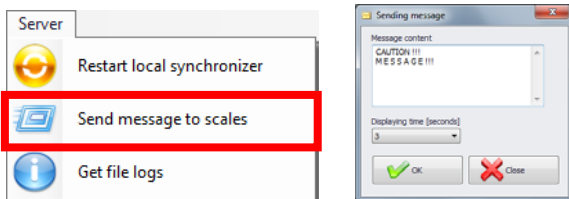


Confirm the below message.



2.2.3.2. Send messages to scales.

It is possible to send one message to all scales working in the system. In menu **Server** select option **Send messages to scales**.






Time of displaying messages can be set up from 3 to 3600 seconds.

To send the message press  button,
 Or close the box pressing  button.

On all scales in the system you will see the following message.

2.2.4. Symbol and status of scales in E2R Manager.

Status informing about starting computer - scale communication:

	Communication with scale initiated, Proper settings on scale, Proper scale settings in E2R Synchronizer.
	Communication with scale initiated, Temporary no reply, Improper settings on scale or improper scale settings in E2R Synchronizer.
	Communication with scale not initiated, Scale is turned out or no connection with communication interface, Improper settings on scale or improper scale settings in E2R Synchronizer.

2.2.5. Connection restart and scales update in E2R Manager.

All files edited in **E2R System** apart from products are transferred (updated) from the computer to scales only after **E2R SYNCHRONIZER** restart (connection restart or the scale restart).

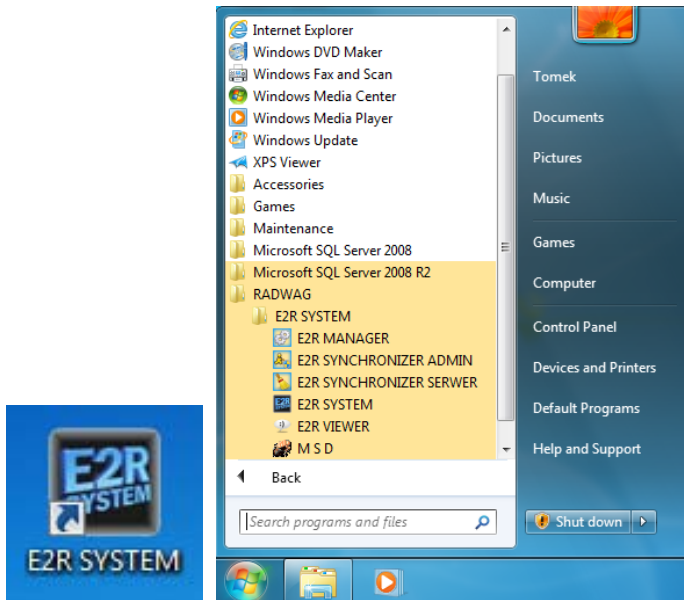
When the system is in operation you can restart the scale by double-click on a selected scale symbol in **E2R Manager**. After several seconds the scale is reconnected to the system and all scale files are updated.

3. E2R SYSTEM

The manual was created on the basis of **E2R SYSTEM** in 13.8.28. version and might slightly differ from the scale you have.

3.1. Program startup

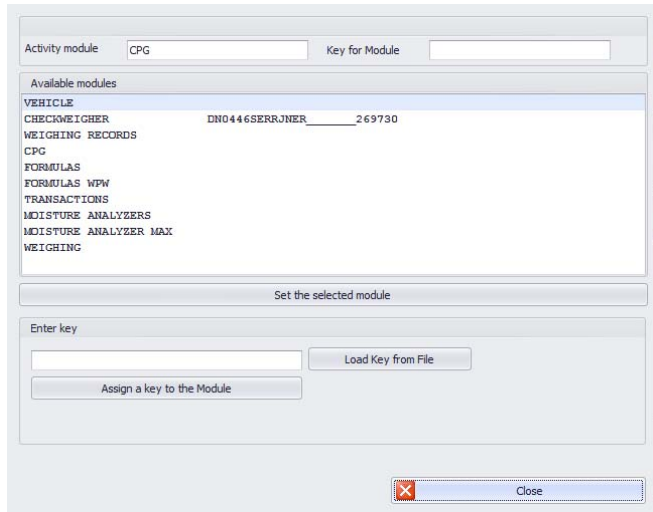
The program can be activated from a shortcut on the desktop or from the menu: **START/PROGRAMY/RADWAG/E2R SYSTEM/E2R SYSTEM**



3.1.1. Module selection

After **E2R SYSTEM** program installation, on the first startup you will see the box of module selection which will be initiated at the program startup.

Select the module from the list and press **Set the Selected Module**.

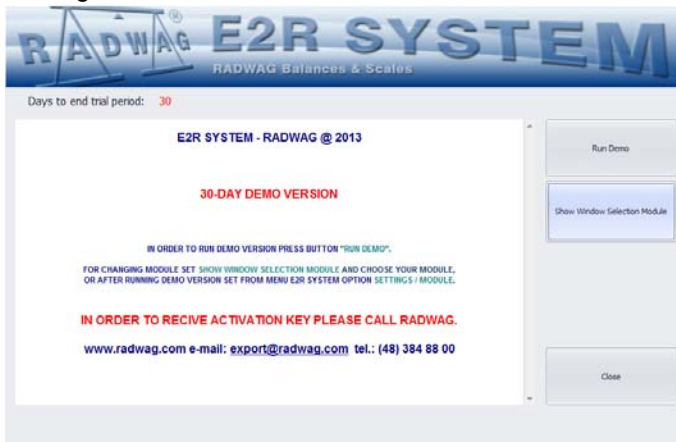


If you have a licence it is recommended in the beginning to activate the selected module and set this module later.

3.1.2. DEMO box

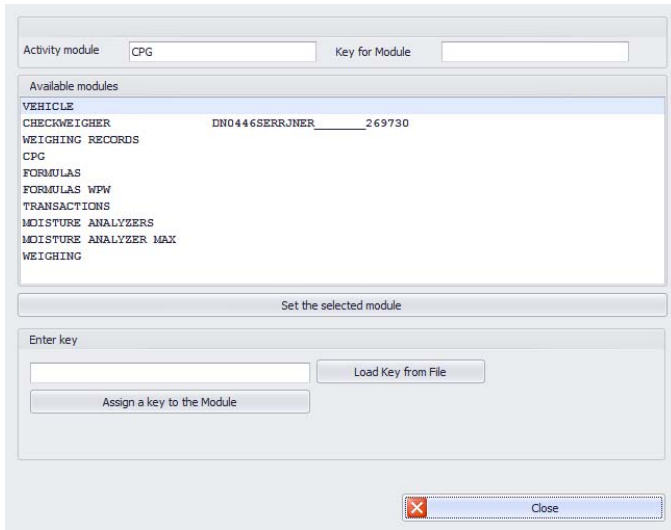
E2R SYSTEM after installation is a demo program with all modules available for **30 days** of trial period.

In the startup box pressing **RUN DEMO** button, you can run a demo version or select the module selection window where you can activate the licence pressing **WINDOW SELECTION MODULE** button.



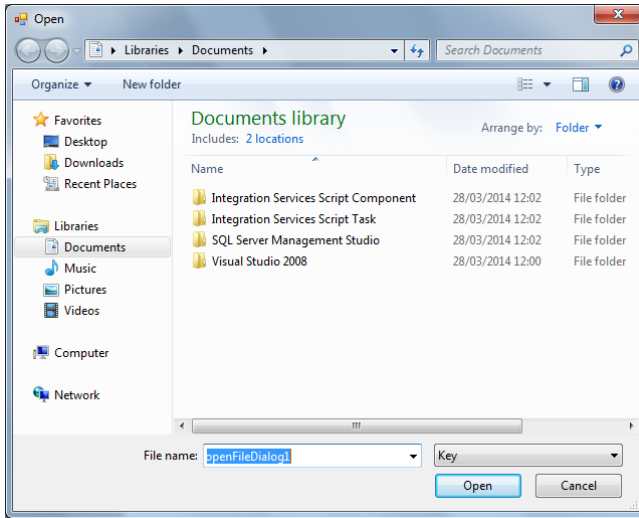
3.1.3. Module activation

Every module activation is done only once and until the program another activation it will not be repeated.
In case of a multi-stand version, activation must be carried out on every computer individually.

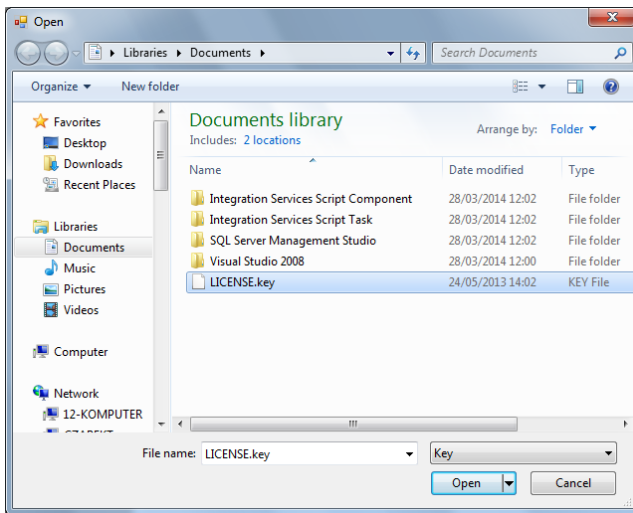


Select the module from the list, in the box **Enter Key** insert the key manually. Next, using **Assign a key to the Module** button, activate the selected module. Another, simpler way to activate the program is indicating the licence file with *.button extension. The file can be found on the program CD or receive per email.

Pressing **Load Key from File**, you will see a navigation box in the operation system in which you need to find and indicate the file with the key. Select the file pressing **Open** button.

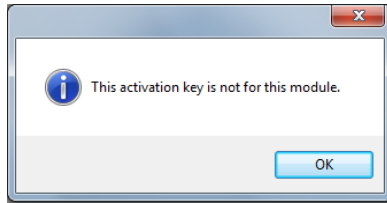


The licence will be displayed in box **Enter Key**.

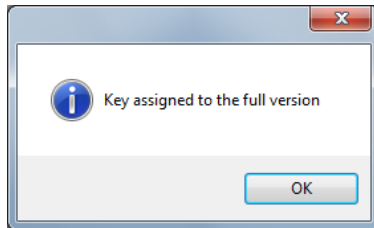


Select the proper module and press **Assign a key to the Module** button.

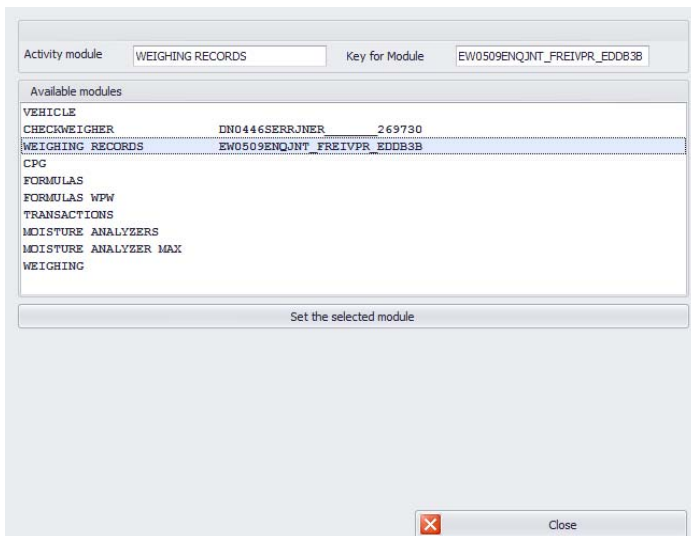
If you assign an improper module to your key, the following message will be displayed.



The successfully completed activation process will generate the following message.



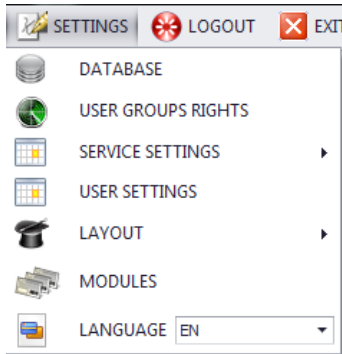
Finally, the program full version will be assigned to our module on the module list.




Before closing, select the module and press **Set the Selected Module**.

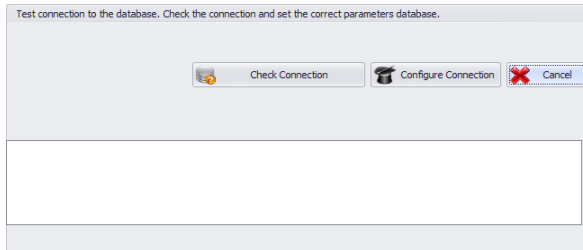
3.2. Program settings

Activate the settings pressing  **SETTINGS** button in the top bar.




3.2.1. Database

In order to activate database settings, click  **DATABASE** button in module **Settings**.




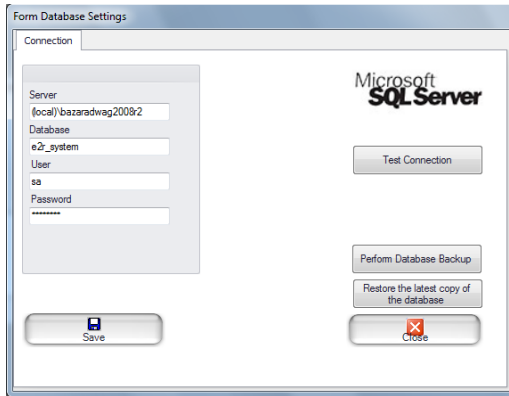
Database settings feature the following functions:

- Check Connection,
- Configure Connection,
- Save and Recreate Database.

In the top bar of the box you can see the status of connection with the database. Press  **Cancel** button to stop.

3.2.1.1. Configure connection

On pressing  **Configure Connection** in the databases settings box, you will see database settings connection with the database.



It features the following fields:

Server (IP)	IP or server name on which SQL server is activated (if the database has the determined instance, insert it as well). Format: SERWER\INSTANCE By default: (local)\bazaradwag2008r2
Base	SQL database name, by default e2r_system
User	User name, by default sa
Password	User password, by default Radwag99 Pasword is coded and is not visible for the user.

Caution!

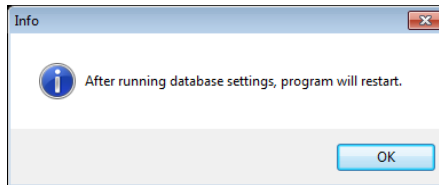
After a multi-stand version installation in the box *Server (IP)*, you need to set the IP address or the server name on which the SQL database is installed.

On pressing **Test Connection**, connection with the database is tested. Next you will see the box with information inserted earlier:

On confirming the above box, you will see the information about the status of connection with the database.



On closing the database settings, you will see the information about the program restart, which should be confirmed by pressing **OK**.

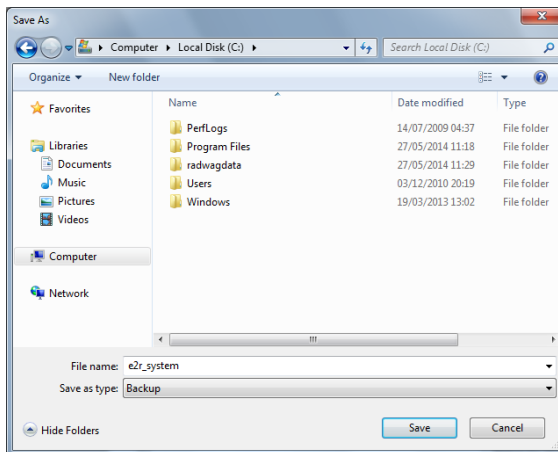


3.2.1.1.1 Database copy

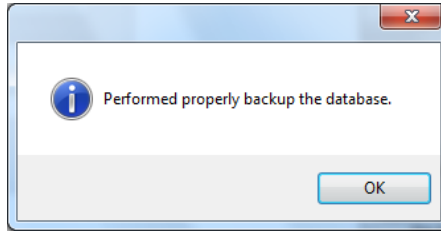
The full copy of SQL database can be formed on the computer on which the SQL database motor is activated. In the box **Database Settings** press **Perform Database Backup**.



In the navigation window select the destination of the database copy backup.

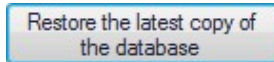


Next the following message will be displayed.

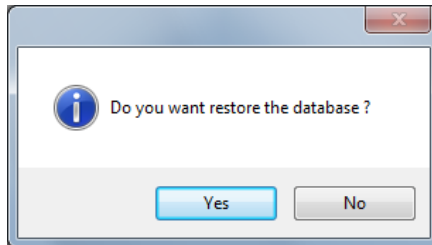


3.2.1.1.2 Restore the latest copy of the database.

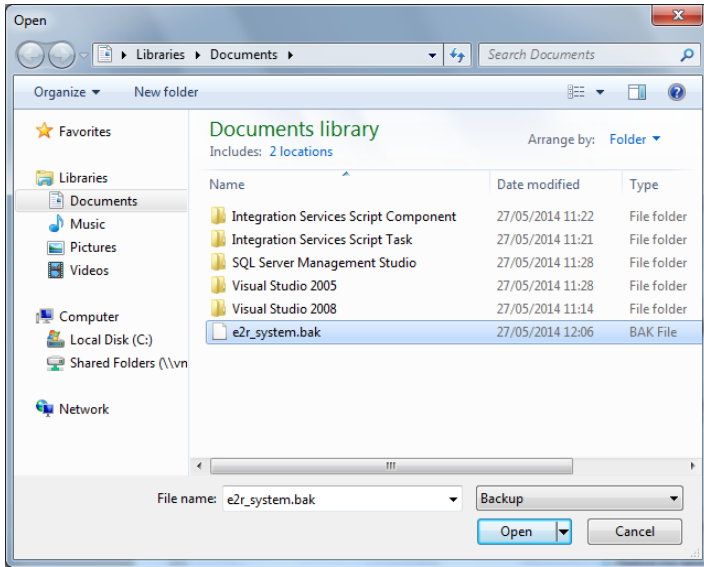
Restoring the full SQL database can be done on the computer on which the SQL database motor is activated, like in case of a copy. To do that, in the box **Database Settings** press **Restore the latest copy of the database** button.



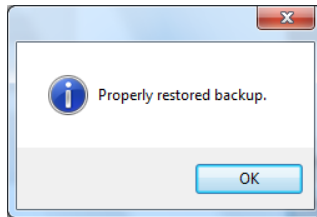
Pressing **YES**, confirm the message with a request.



In the navigation window, select the destination of the database copy where the database will be restored.



Depending on the database size, the operation takes several seconds, and the successful completion is confirmed with the below message.



CAUTION!

During the database restoring, all the data in the existing database will be deleted, and the restored data will be exactly the same as the data in the moment of making the copy.

If HTY, WPY, WLY and 3Y series scales work in the system and the data on the scales was not deleted previously, on establishing the connection the missing weightments and other information from those scales will be acquired to the system.

MANUFACTURER
OF ELECTRONIC WEIGHING INSTRUMENTS



RADWAG Balances & Scales
26 – 600 Radom
Bracka 28
POLAND

phone. +48 48 38 48 800
fax. + 48 48 385 00 10
Sales Department + 48 48 366 80 06
www.radwag.pl

