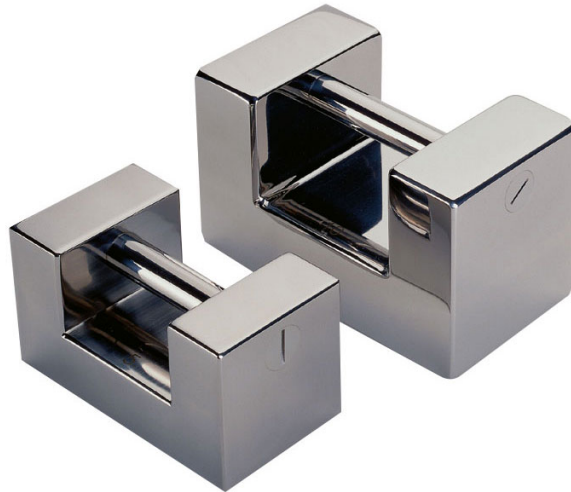




More information on the website
mirror.radwag.com/es/info,w1,TVT

Pesas de clase F1 - rectangular con mango - 25 kg

OP-203-0133



The drawings, photos and graphics used are for illustrative purposes only.

Datos tecnicos

Parámetros metrológicos

Clase OIML	F1
------------	----

Construcción

Material	Acero inoxidable
----------	------------------

Valor nominal	25 kg
---------------	-------

Trabaja con (Additional Fee)

Cepillos