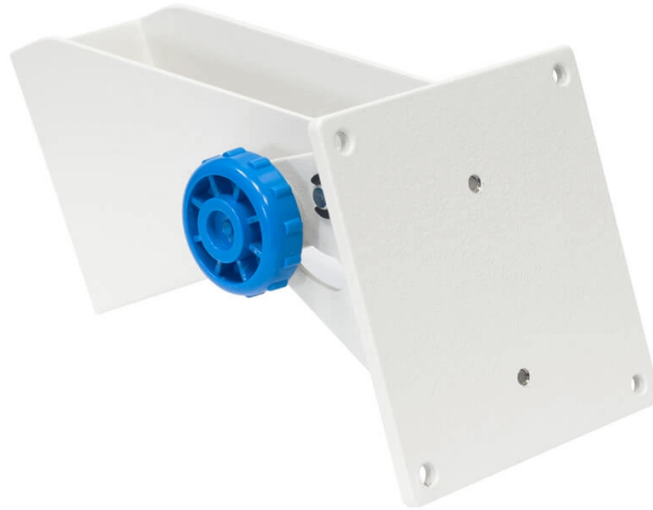




More information on the website  
[mirror.radwag.com/en/info,w1,SXL](https://mirror.radwag.com/en/info,w1,SXL)

## Adjustable wall bracket for PUE C32 / PUE 7.1 terminal



The drawings, photos and graphics used are for illustrative purposes only.

### Overview

PUE-7-36 wall-mounting kit has been designed to facilitate installation of PUE 7.1 and PUE C32 terminals on a vertical surface. The kit enables adjustment of the terminal tilt.

Intended use:

Easy installation of PUE 7.1 terminal on a vertical and horizontal surface, adjustable tilt angle, Easy installation of PUE C32 terminal on a vertical and horizontal surface, adjustable tilt angle.



### Compatible with

C32 Multifunctional Scale  
C32.PM Precision Balance

PUE C32 Weighing Terminal  
PUE 7.1 Weighing Terminal