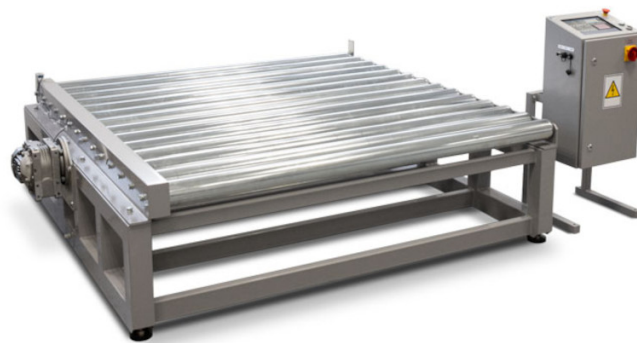




More information on the website
mirror.radwag.com/en/info,w1,SPT

DWT/RC R Checkweigher

WK-106-000_



The drawings, photos and graphics used are for illustrative purposes only.

Datasheet

Metrological parameters	
Maximum capacity [Max]	6000 kg
Minimum load	2 kg
Readability [d]	2 kg
Tare range	-6000 kg
Physical parameters	
Display	10" graphic colour touchscreen
Construction	
Protection class	IP 55 / 56
Communication interface	
Communication interface	RS232, RS485, Ethernet, Profinet, Profibus, Modbus, ASCII
Electrical parameters	
Power supply	230/400 V AC 50/60 Hz

Environmental conditions

Operating temperature -10 – +40 °C

Features of use

Conveyor velocity 0.1 – 0.5 m/s



Accessories (Additional Fee)

Displays

RS 232 cables (scale - ZEBRA printer)

RS 232, RS 485 cables

Label Printers

Receipt Printer

USB cable (scale - printer)