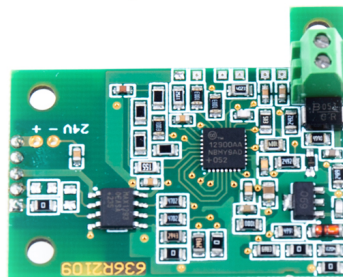




More information on the website  
[mirror.radwag.com/en/info,w1,S1E](https://mirror.radwag.com/en/info,w1,S1E)

## Analog output module (PUE H315)

WX-016-0276



The drawings, photos and graphics used are for illustrative purposes only.

### Overview

The analog output module converts the scale output signal (mass) into an analog signal. The mass value is most often represented in the form of a 4-20 mA current signal. Due to the low resolution of the module (several thousand), such a signal is used in automation for processes that do not require high precision.

Analog output module is available in: IM01.EX-2 communication module and MW01-A7 weighing module, and for an extra charge in PUE H315 terminals.

### Compatible with (Additional Fee)

PUE H315 Weighing Terminal