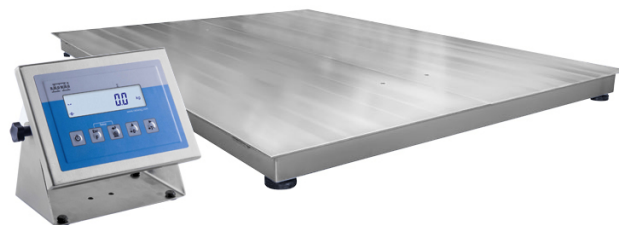




More information on the website
mirror.radwag.com/en/info,w1,RCI

H315.4.600/1500.H8/9 Stainless Steel Platform Scale


WP-232-1007





The drawings, photos and graphics used are for illustrative purposes only.


Functions


 Plus/Minus Control


 Percent Weighing


 Totalizing

 Parts counting

 Internal battery

 Peak hold

 Newton unit measurement

 Animal weighing

Datasheet

| Metrological parameters | |
|-------------------------|--------------------|
| Maximum capacity [Max] | 600 / 1500 kg |
| Minimum load | 4 kg |
| Readability [d] | 200 / 500 g |
| Verification unit [e] | 200 / 500 g |
| Tare range | -1500 kg |
| OIML Class | III |
| Physical parameters | |
| Display | 4.3" LCD (backlit) |

| Physical parameters | |
|---------------------------------|-----------------------------------------------------------------|
| Cable length | 3 m |
| Weighing pan dimensions | 1200×1500 mm |
| Weighing platform height | 88 mm |
| Packaging dimensions W x D x H | 1600×1300×430 mm |
| Scale mass with indicator | 158 kg |
| Gross weight | 181 kg |
| Construction | |
| Protection class | IP 66 / 69 construction, IP 66 / 67 / 69 terminal |
| Communication interface | |
| Communication interface | RS232, USB |
| Optional interfaces | RS232 or RS485 or 4IN/4OUT or Ethernet or analog output 4-20 mA |
| Electrical parameters | |
| Power supply | 100 – 240 V AC 50/60 Hz |
| Optional power supply | internal rechargeable battery |
| Operation time on batteries | max 7h |
| Environmental conditions | |
| Operating temperature | -10 – +40 °C |
| Relative humidity | 10% – 85% RH no condensation |



Additional fee for verification



Accessories (Additional Fee)

AP2-4 Current Loop Unit
 RS 232 cables (scale - printer)
 Ramps
 Displays
 Frame for embedded scales
 Ethernet cables (scale - Ethernet)
 RS 232, RS 485 cables

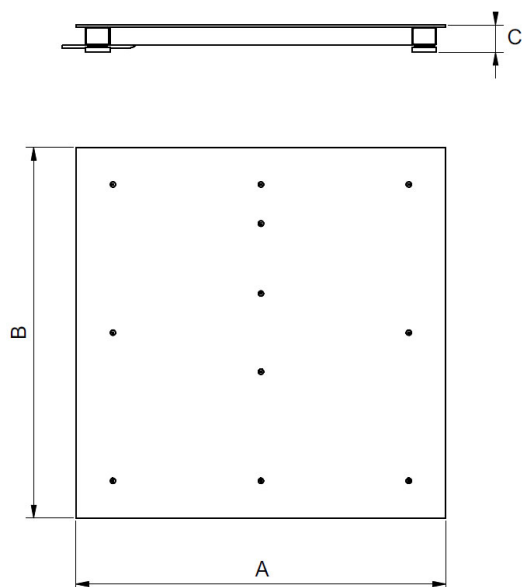
Power Adapters
 RS 232 – Ethernet Converter
 USB adapter
 Receipt Printer
 USB cable (scale - printer)
 Stands, wall mounting kits and mounting brackets
 RS 232 – USB Converter

Software (Additional Fee)

- RAD Key [WX-010-0005]
- Scale Editor 2.1 [WX-010-0173]

- R-Lab [WX-010-0080]

Device dimensions W x D x H



| Scale type | A [mm] | B [mm] | C [mm] |
|------------------|--------|--------|--------|
| H315.4.300.H6 | 800 | 800 | 88 ±2 |
| H315.4.600.H6 | 800 | 800 | 88 ±2 |
| H315.4.300.H7 | 1000 | 1000 | 88 ±2 |
| H315.4.600.H7 | 1000 | 1000 | 88 ±2 |
| H315.4.1500.H7 | 1000 | 1000 | 88 ±2 |
| H315.4.1500.H8 | 1200 | 1200 | 88 ±2 |
| H315.4.3000.H8 | 1200 | 1200 | 111 ±2 |
| H315.4.1500.H8/9 | 1200 | 1500 | 88 ±2 |
| H315.4.3000.H8/9 | 1200 | 1500 | 111 ±2 |
| H315.4.1500.H9 | 1500 | 1500 | 88 ±2 |
| H315.4.3000.H9 | 1500 | 1500 | 111 ±2 |
| H315.4.3000.H10 | 1500 | 2000 | 111 ±2 |
| H315.4.6000.H10 | 1500 | 2000 | 166 ±2 |