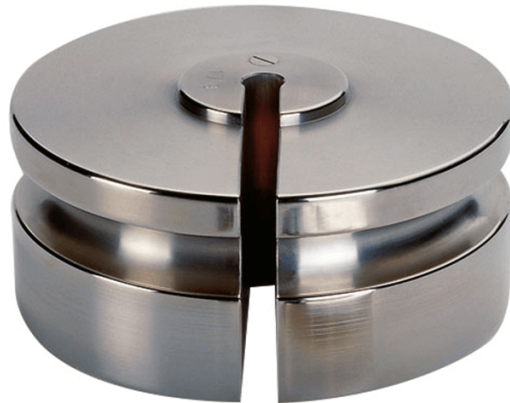




More information on the website
mirror.radwag.com/it/info,w1,Q6R

Pesi standard F2 - asolata - 2 kg



The drawings, photos and graphics used are for illustrative purposes only.

Specifiche

Parametri metrologici

| | |
|-----------------|------|
| Classe OIML | F2 |
| Valore nominale | 2 kg |

Compatibile con

Pennelli