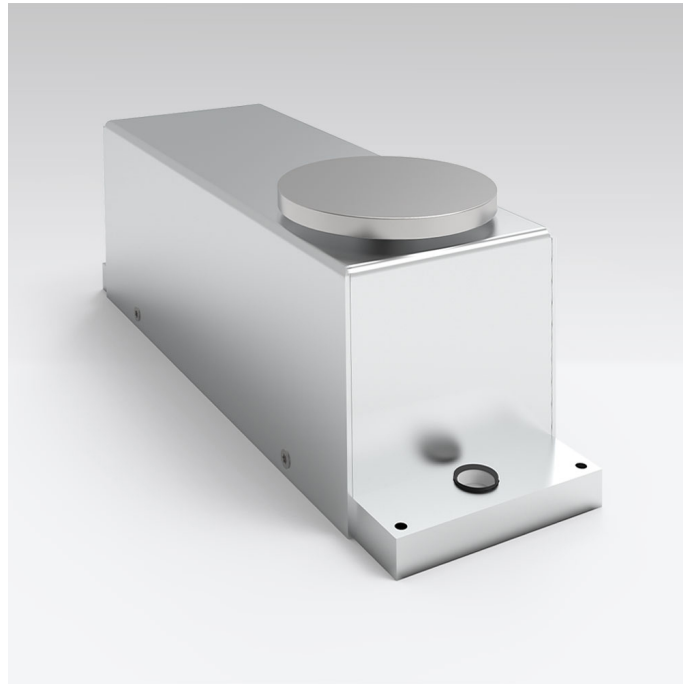




More information on the website  
[mirror.radwag.com/en/info,w1,P7R](http://mirror.radwag.com/en/info,w1,P7R)

# MPS.T.6000.R1 Weighing Module

WX-016-0350



The drawings, photos and graphics used are for illustrative purposes only.

## Datasheet

Metrological parameters	
Maximum capacity [Max]	6000 g
Preload range	600 g
Readability [d]	0.1 g
Repeatability	0.15 g
Warm-up time after connection to power	1 h
Stabilization time	3 s
Adjustment	external
Construction	
Protection class	IP 43
Housing	aluminum
Weighing pan material	Stainless steel
Communication interface	
Communication interface	RS232, max 115.2 kbps, Radwag ASCII protocol

### Electrical parameters

Power supply Adapter: 100 – 240V AC 50/60Hz 0.6A; 12V DC 1.2A Module: 12V DC

### Environmental conditions

Operating temperature +10 – +40 °C

Relative humidity 40% – 80%

### Physical parameters

Weighing pan dimensions ø65 mm

Device dimensions W x D x H 220x70x75 mm

Net weight 0.9 kg



## Accessories (Additional Fee)

RS 232, RS 485 cables  
Antivibration Tables

R Terminal (WDM-8)

## Software (Additional Fee)

• R-Panel [WX-010-0187]

## Device dimensions W x D x H

