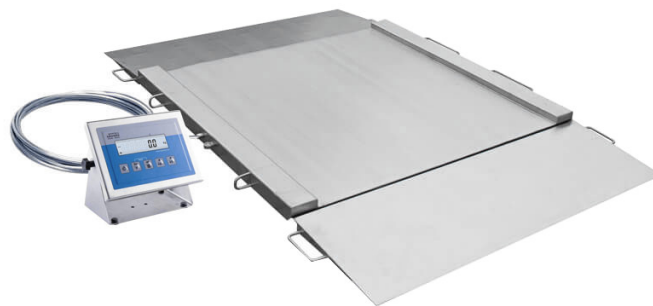




More information on the website  
[mirror.radwag.com/en/info,w1,NVI](http://mirror.radwag.com/en/info,w1,NVI)

# H315.4N.1500.H2 Stainless Steel Ramp Scale

WP-234-0007



The drawings, photos and graphics used are for illustrative purposes only.

## Functions

 Plus/Minus Control

 Percent Weighing

 Totalizing

 Parts counting

 Internal battery

 Peak hold

 Newton unit measurement

 Animal weighing

## Datasheet

| Metrological parameters                |          |
|--|----------|
| Maximum capacity [Max]                 | 1500 kg  |
| Minimum load                           | 10 kg    |
| Readability [d]                        | 500 g    |
| Verification unit [e]                  | 500 g    |
| Tare range                             | -1500 kg |
| Max readability for non-verified scale | 200 g    |
| OIML Class                             | III      |

| Physical parameters            |   |
|--------------------------------|---|
| Display                        | 4.3" LCD (backlit)  |
| Cable length                   | 3 m   |
| Weighing pan dimensions        | 1100×1200 mm  |
| Packaging dimensions W x D x H | 1500×1300×600 mm  |
| Scale mass with indicator      | 190 kg  |
| Construction                   |   |
| Protection class               | IP 66 / 69 construction, IP 66 / 67 / 69 terminal               |
| Communication interface        |   |
| Communication interface        | RS232, USB  |
| Optional interfaces            | RS232 or RS485 or 4IN/4OUT or Ethernet or analog output 4-20 mA |
| Electrical parameters          |   |
| Power supply                   | 100 – 240 V AC 50/60 Hz   |
| Optional power supply          | internal rechargeable battery                                   |
| Operation time on batteries    | max 7h  |
| Environmental conditions       |   |
| Operating temperature          | -10 – +40 °C  |
| Relative humidity              | 10% – 85% RH no condensation                                    |



Additional fee for verification



## Accessories (Additional Fee)

AP2-4 Current Loop Unit  
 RS 232 cables (scale - printer)  
 Displays  
 Ethernet cables (scale - Ethernet)  
 RS 232, RS 485 cables  
 Power Adapters

RS 232 – Ethernet Converter  
 USB adapter  
 Receipt Printer  
 USB cable (scale - printer)  
 Stands, wall mounting kits and mounting brackets  
 RS 232 – USB Converter

## Software (Additional Fee)

• RAD Key [WX-010-0005]  
 • Scale Editor 2.1 [WX-010-0173]

• R-Lab [WX-010-0080]

## Device dimensions W x D x H



| Model           | Max     | A    | B    | C    | C1 | D    | E    | F    | G    | H    |
|-----------------|---------|------|------|------|----|------|------|------|------|------|
| H315.4N.150.H1  | 150 kg  | 840  | 860  | 45,5 | 76 | 1040 | 1710 | 778  | 940  | 1170 |
| H315.4N.300.H1  | 300 kg  | 840  | 860  | 45,5 | 76 | 1040 | 1710 | 778  | 940  | 1170 |
| H315.4N.600.H1  | 600 kg  | 840  | 860  | 45,5 | 76 | 1040 | 1710 | 778  | 940  | 1170 |
| H315.4N.150.H2  | 1500 kg | 1100 | 1200 | 45,5 | 76 | 1300 | 2050 | 1118 | 1200 | 1430 |
| H315.4N.300.H2  | 300 kg  | 1100 | 1200 | 45,5 | 76 | 1300 | 2050 | 1118 | 1200 | 1430 |
| H315.4N.600.H2  | 600 kg  | 1100 | 1200 | 45,5 | 76 | 1300 | 2050 | 1118 | 1200 | 1430 |
| H315.4N.1500.H2 | 1500 kg | 1100 | 1200 | 52,5 | 76 | 1300 | 2150 | 1118 | 1200 | 1430 |
| H315.4N.300.H3  | 300 kg  | 1200 | 1500 | 45,5 | 76 | 1400 | 2350 | 1418 | 1300 | 1530 |
| H315.4N.600.H3  | 600 kg  | 1200 | 1500 | 45,5 | 76 | 1400 | 2350 | 1418 | 1300 | 1530 |
| H315.4N.1500.H3 | 1500 kg | 1200 | 1500 | 52,5 | 76 | 1400 | 2450 | 1418 | 1300 | 1530 |
| H315.4N.300.H4  | 300 kg  | 1500 | 1500 | 52,5 | 76 | 1700 | 2450 | 1418 | 1600 | 1830 |
| H315.4N.600.H4  | 600 kg  | 1500 | 1500 | 52,5 | 76 | 1700 | 2450 | 1418 | 1600 | 1830 |
| H315.4N.1500.H4 | 1500 kg | 1500 | 1500 | 52,5 | 76 | 1700 | 2450 | 1418 | 1600 | 1830 |