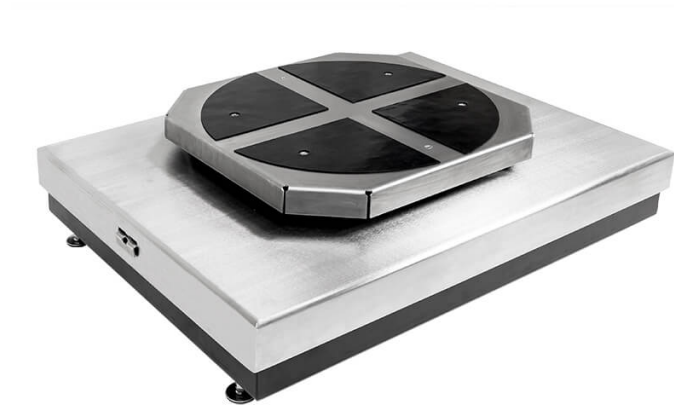




More information on the website
mirror.radwag.com/en/info,w1,MPU

HRP 1000.1.5Y.KO Mass Comparator



The drawings, photos and graphics used are for illustrative purposes only.

Datasheet

| Metrological parameters | |
|---------------------------------|---------------------------------|
| E1 Calibration Range | - |
| E2 Calibration Range | - |
| F1 Calibration Range | 1000 kg |
| F2 Calibration Range | 500 – 1000 kg |
| M1 Calibration Range | 100 – 1000 kg |
| M2 Calibration Range | 50 – 1000 kg |
| Maximum capacity [Max] | 1050 kg |
| Readability [d] | 0.5 g |
| Standard repeatability [5% Max] | 0.9 g |
| Standard repeatability [Max] | 1.2 g |
| Permissible repeatability | 2 g |
| Eccentric load deviation | 0 – weighing pan self centering |
| Eccentricity (tested load) | 1d / 1 mm |
| Electric compensation range | 0 – 1050 kg |
| Stabilization time | 10 s |

| Metrological parameters | |
|---|--|
| Adjustment | internal (automatic) |
| Physical parameters | |
| Display | 10" graphic colour touchscreen |
| Weighing pan dimensions | 1000×800 mm |
| Self-centering weighing pan dimensions | 600×600 mm |
| Weighing unit dimensions with self-centering weighing pan | 1010×800×275 mm |
| Controlling device dimensions | 249×170×72 mm |
| Comparator packaging dimensions without self-centering weighing pan | 1200×1000×440 mm |
| Comparator packaging dimensions with self-centering weighing pan | 1200×1000×485 mm |
| Net weight | 200 kg |
| Net weight | 200 kg |
| Gross weight | 269 kg |
| Gross weight | 269 kg |
| Recommended load speed | 0.3 m/min |
| Maximum permissible load speed | 0.6 m/min |
| Weighing unit dimensions without self-centering weighing pan | 1010×800×182 mm |
| Communication interface | |
| Communication interface | 2×USB-A, USB-C, HDMI, Ethernet, Wi-Fi, Hotspot |
| Environmental conditions | |
| Operating temperature | +15 – +30 °C |
| Operating temperature change rate | ±1 °C / 12 h |
| Relative humidity | 40% – 60% |
| Relative humidity change rate | ±5% / 4 h |

Repeatability is expressed as a standard deviation determined for 6 ABBA cycles. Standard deviation is experimentally determined under ambient conditions for calibration of F2 class mass standards specified in OIML R111 (Table C.1.) document.

* Wi-Fi® is a registered trademark of Wi-Fi® Alliance.



Accessories

Self-centering pan for HRP KO comparator
 Additional modules
 Protective cover for balances
 Barcode scanners
 THBR 2.0 System - Ambient Conditions Monitoring

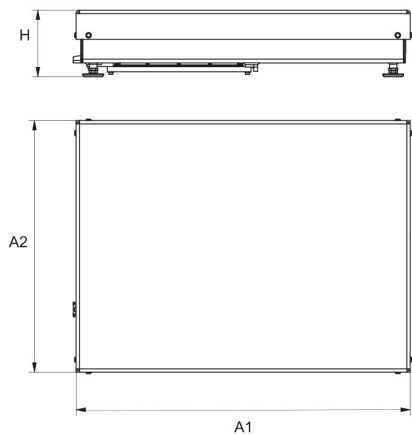
RS 232, RS 485 cables
 Receipt Printer
 Stands, wall mounting kits and mounting brackets
 Fingerprint Reader

Software

- RAD Key [WX-010-0005]
- RMCS System Network Management of Calibration Process [WX-010-0048]

- RMCS Lite [WX-010-0164]

Device dimensions



| Type | A1 | A2 | H |
|----------------|------|------|-----|
| HRP 200.5Y.KO | 809 | 600 | 162 |
| HRP 500.5Y.KO | 809 | 600 | 162 |
| HRP 1000.5Y.KO | 1011 | 800 | 182 |
| HRP 1500.5Y.KO | 1250 | 1000 | 235 |
| HRP 2000.5Y.KO | 1250 | 1000 | 235 |

Dimensions in mm