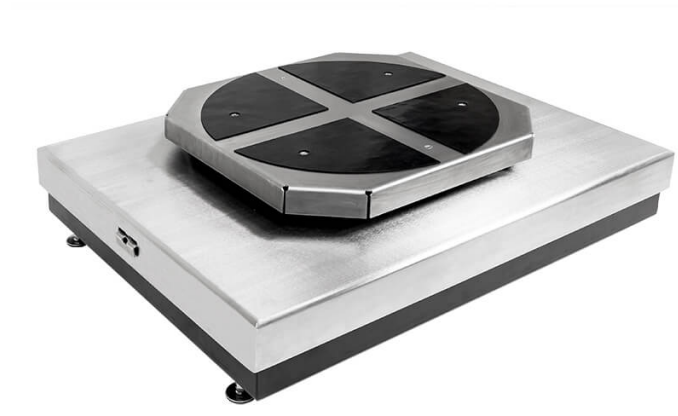




More information on the website
mirror.radwag.com/en/info,w1,EVM

HRP 150.1.5Y.KO Mass Comparator



The drawings, photos and graphics used are for illustrative purposes only.

Datasheet

Metrological parameters	
E1 Calibration Range	-
E2 Calibration Range	-
F1 Calibration Range	100 kg
F2 Calibration Range	50 – 100 kg
M1 Calibration Range	20 – 100 kg
M2 Calibration Range	10 – 100 kg
Maximum capacity [Max]	151 kg
Readability [d]	0.05 g
Standard repeatability [5% Max]	0.1 g
Standard repeatability [Max]	0.15 g
Permissible repeatability	0.25 g
Eccentricity (tested load)	2d / 1 mm
Electric compensation range	0 – 151 kg
Stabilization time	10 s
Adjustment	internal (automatic)

Physical parameters	
Display	10" graphic colour touchscreen
Weighing pan dimensions	800×600 mm
Self-centering weighing pan dimensions	600×600 mm
Weighing unit dimensions with self-centering weighing pan	810×600×260 mm
Controlling device dimensions	249×170×72 mm
Comparator packaging dimensions without self-centering weighing pan	988×800×310 mm
Comparator packaging dimensions with self-centering weighing pan	988×800×355 mm
Net weight	143.5 kg
Gross weight	166.5 kg
Recommended load speed	0.3 m/min
Maximum permissible load speed	0.6 m/min
Weighing unit dimensions without self-centering weighing pan	810×600×165 mm

Communication interface	
Communication interface	2×USB-A, USB-C, HDMI, Ethernet, Wi-Fi, Hotspot

Environmental conditions	
Operating temperature	+15 – +30 °C
Operating temperature change rate	±1 °C / 12 h
Relative humidity	40% – 60%
Relative humidity change rate	±5% / 4 h

Repeatability is expressed as a standard deviation determined for 6 ABBA cycles. Standard deviation is experimentally determined under ambient conditions for calibration of F2 class mass standards specified in OIML R111 (Table C.1.) document.

* Wi-Fi® is a registered trademark of Wi-Fi® Alliance.



Accessories

RFID Tags
 Additional modules
 Protective cover for balances
 Barcode scanners
 THBR 2.0 System - Ambient Conditions Monitoring

RS 232, RS 485 cables
 Receipt Printer
 Stands, wall mounting kits and mounting brackets
 Fingerprint Reader
 Self-centering pan for HRP KO comparator

Software

- RAD Key [WX-010-0005]
- RMCS System Network Management of Calibration Process [WX-010-0048]

- RMCS Lite [WX-010-0164]

Device dimensions



Type	A1	A2	H
HRP 200.5Y.KO	809	600	162
HRP 500.5Y.KO	809	600	162
HRP 1000.5Y.KO	1011	800	182
HRP 1500.5Y.KO	1250	1000	235
HRP 2000.5Y.KO	1250	1000	235

Dimensions in mm