



More information on the website  
[mirror.radwag.com/it/info,w1,EL5](https://mirror.radwag.com/it/info,w1,EL5)

## Camera di protezione da correnti d'aria 153

WX-002-0051



The drawings, photos and graphics used are for illustrative purposes only.

## Specifiche

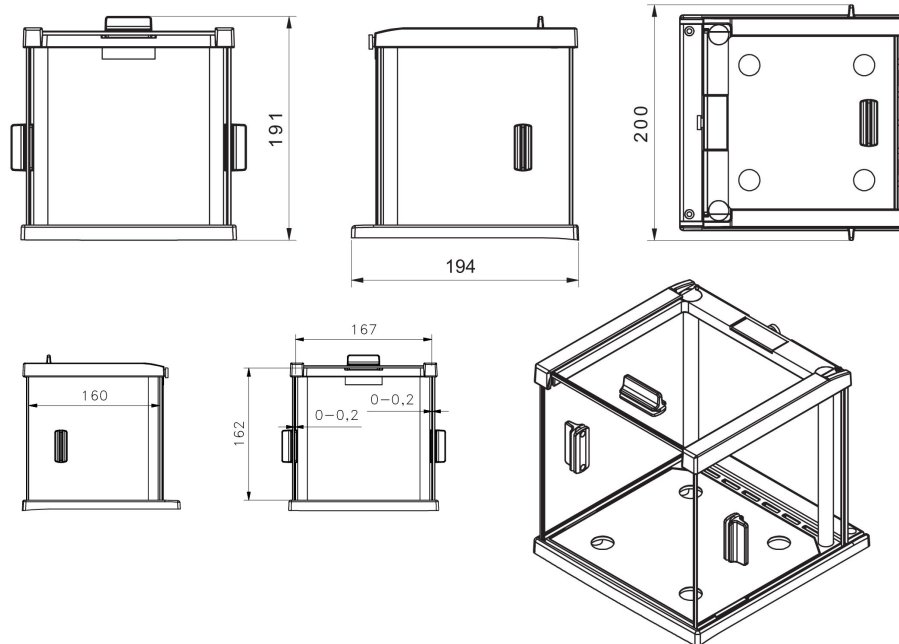
### Parametri fisici

Dimensioni	194x200x191 mm
------------	----------------

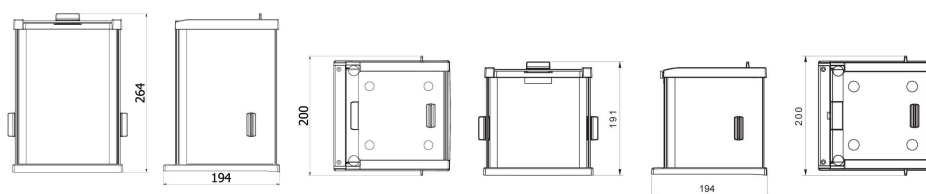
## Compatibile con (Additional Fee)

Bilance PS 5Y per controllo CPC  
Bilancia di precisione PS X7  
Bilancia di precisione PS 5Y

Bilancia di precisione PS R1  
Bilance PS X7 per controllo CPC  
Bilancia di precisione PS R2

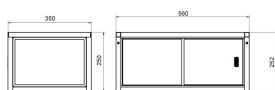


## Device dimensions L x P x A

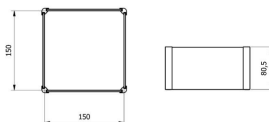


Anti-draft chamber for balances with 128x128 mm weighing pan

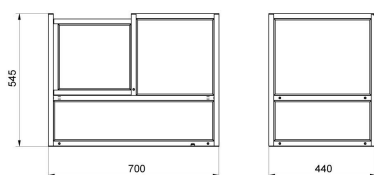
Anti-draft chamber for X2 and R2 precision balances



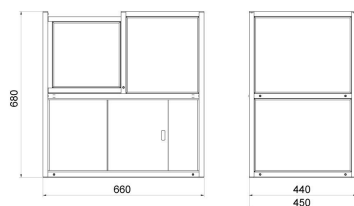
Anti-draft chamber for microbalances



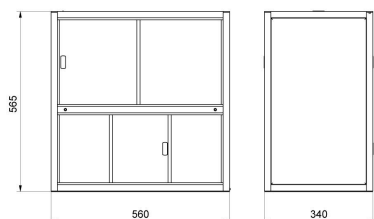
Draft shield for precision balances



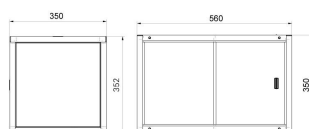
Anti-draft chamber for APP-00-SK mass comparators



Anti-draft chamber for APP-KO-SK mass comparators



Anti-draft chamber for WAY-KO mass comparators



Anti-draft chamber for XA 5Y / XA 5Y.A balances