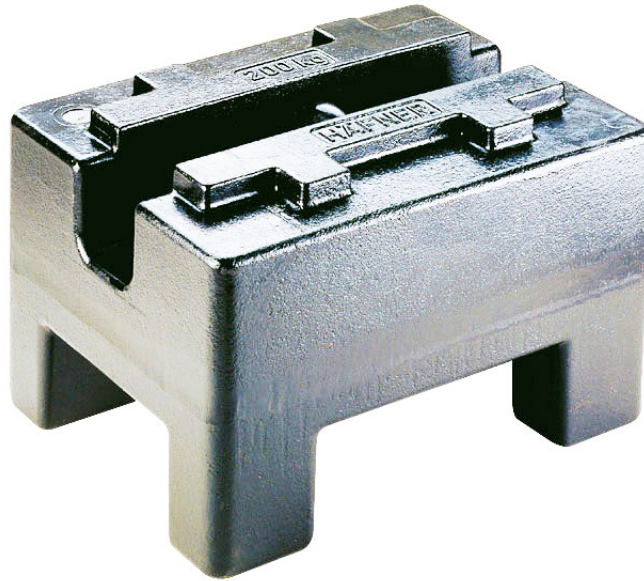




More information on the website
mirror.radwag.com/de/info,w1,7TS

Prüfgewicht der M1 Klasse - rechteckig, spritzverzinkt - 100 kg

OP-403-0102



The drawings, photos and graphics used are for illustrative purposes only.

Technische Daten

Messtechnische Parameter

| | |
|-------------|--------|
| OIML-Klasse | M1 |
| Nominalwert | 100 kg |

Kompatibel mit (Additional Fee)

Pinsel