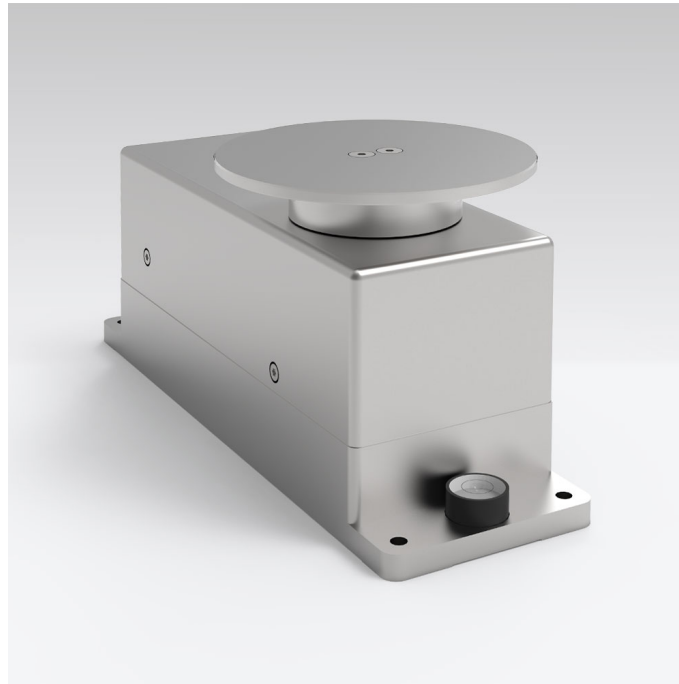




# MPS.M.10000.R1 Weighing Module

WX-016-0345

More information on the website  
[mirror.radwag.com/en/info,w1,70W](http://mirror.radwag.com/en/info,w1,70W)



The drawings, photos and graphics used are for illustrative purposes only.

## Datasheet

Metrological parameters	
Maximum capacity [Max]	10000 g
Preload range	1000 g
Readability [d]	10 mg
Repeatability	12 mg
Linearity	±20 mg
Warm-up time after connection to power	1 h
Stabilization time	2 s
Adjustment	external
Construction	
Protection class	IP 43
Housing	aluminum
Weighing pan material	aluminum
Communication interface	
Communication interface	RS232, max 115.2 kbps, Radwag ASCII protokół

Electrical parameters	
Power supply	Adapter: 100 – 240V AC 50/60Hz 0.6A; 12V DC 1.2A Modul: 12V DC
Environmental conditions	
Operating temperature	+10 – +40 °C
Relative humidity	40% – 80%
Physical parameters	
Weighing pan dimensions	ø100 mm
Device dimensions	220x70x100 mm
Net weight	1.8 kg



## Accessories (Additional Fee)

RS 232, RS 485 cables

## Software (Additional Fee)

• R-Panel [WX-010-0187]

## Device dimensions

