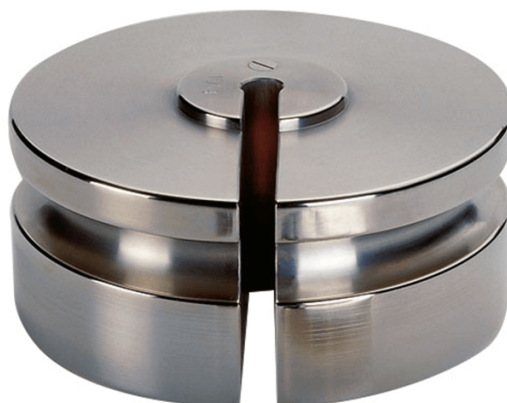




More information on the website  
[mirror.radwag.com/it/info,w1,6EV](https://mirror.radwag.com/it/info,w1,6EV)

## Pesi standard F2 - asolata - 100 g



The drawings, photos and graphics used are for illustrative purposes only.

### Specifiche

#### Parametri metrologici

Classe OIML	F2
Valore nominale	100 g

### Compatibile con

Pinzette

Pennelli