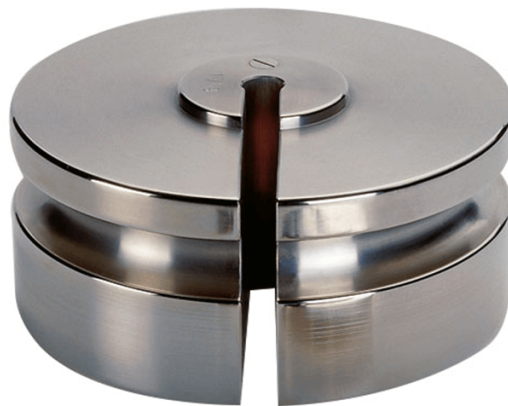




More information on the website
mirror.radwag.com/de/info,w1,6EV

Prüfgewicht der F2 Klasse - Schlitzgewicht- 100 g

OS-101-0027



The drawings, photos and graphics used are for illustrative purposes only.

Technische Daten

Messtechnische Parameter

OIML-Klasse	F2
Nominalwert	100 g

Kompatibel mit (Additional Fee)

Pinzetten	Pinset
-----------	--------