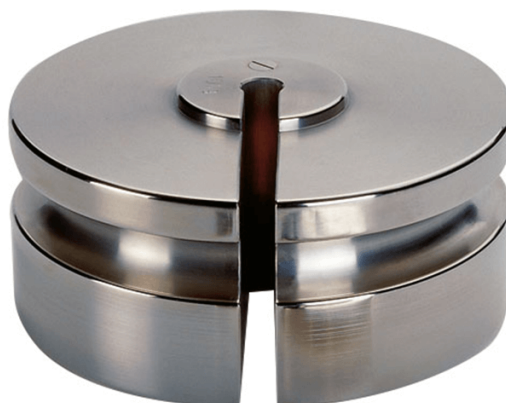




More information on the website  
[mirror.radwag.com/br/info,w1,6EV](https://mirror.radwag.com/br/info,w1,6EV)

## Peso padrão F2 - peso com fenda - 100 g

OS-101-0027



The drawings, photos and graphics used are for illustrative purposes only.

### Ficha Técnica

#### Parâmetros metrológicos

Classe OIML	F2
Valor nominal	100 g

### Compatível com (Additional Fee)

!Pinças

!Pincéis