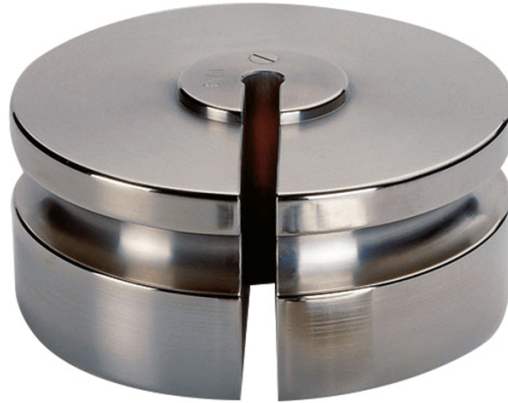




More information on the website
mirror.radwag.com/en/info,w1,5JD

F2 Mass Standard - Slotted Weights - 20 kg



The drawings, photos and graphics used are for illustrative purposes only.

Datasheet

Metrological parameters

| | |
|---------------|-------|
| OIML Class | F2 |
| Nominal value | 20 kg |

Compatible with

Brushes