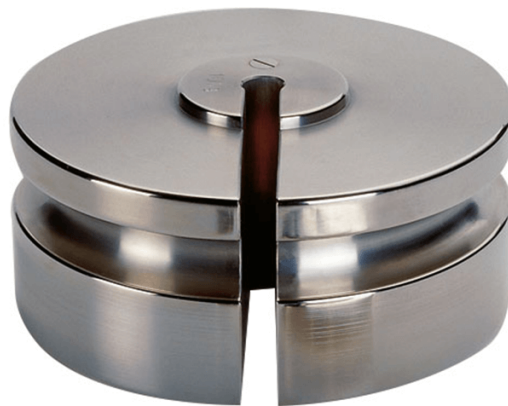




More information on the website  
[mirror.radwag.com/de/info,w1,102](https://mirror.radwag.com/de/info,w1,102)

# Prüfgewicht der F2 Klasse - Schlitzgewicht- 10 g

OS-101-0024



The drawings, photos and graphics used are for illustrative purposes only.

## Technische Daten

### Messtechnische Parameter

|             |      |
|-------------|------|
| OIML-Klasse | F2   |
| Nominalwert | 10 g |

## Kompatibel mit (Additional Fee)

Pinzetten Pinsel